

Datasheet for ABIN5576454
anti-DCLK1 antibody (N-Term)[Go to Product page](#)

2 Images

Overview

Quantity:	100 µg
Target:	DCLK1
Binding Specificity:	N-Term
Reactivity:	Human, Mouse, Rat
Host:	Rabbit
Clonality:	Polyclonal
Conjugate:	This DCLK1 antibody is un-conjugated
Application:	Western Blotting (WB), ELISA, Immunohistochemistry (IHC)

Product Details

Purpose:	Rabbit polyclonal antibody raised against synthetic peptide of DCLK1.
Immunogen:	A synthetic peptide corresponding to 14 amino acids near N-terminus of human DCLK1.
Cross-Reactivity:	Human, Mouse, Rat

Target Details

Target:	DCLK1
Alternative Name:	DCLK1 (DCLK1 Products)
Background:	Full Gene Name: doublecortin-like kinase 1 Synonyms: DCAMKL1, DCDC3A, DCLK, KIAA0369
Gene ID:	9201

Target Details

NCBI Accession: [NP_004725](#)

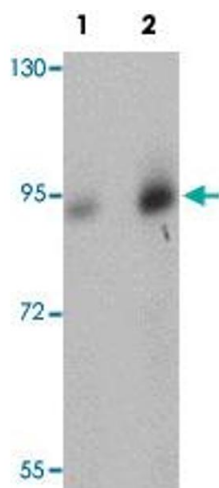
Application Details

Application Notes:	Western blot (0.5-1 µg/mL) The optimal working dilution should be determined by the end user.
Restrictions:	For Research Use only

Handling

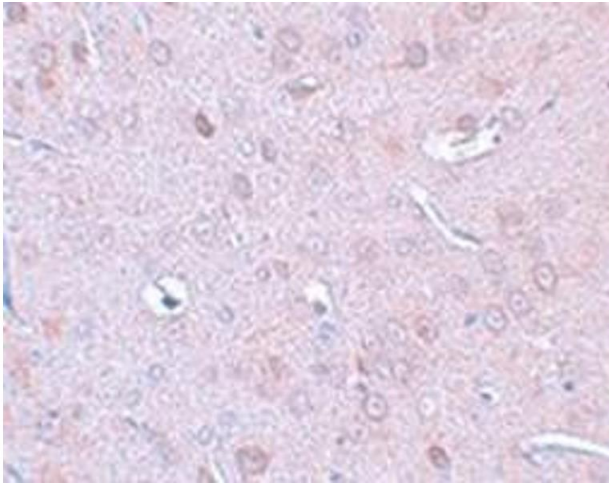
Format:	Liquid
Concentration:	1 mg/mL
Buffer:	In PBS (0.02 % sodium azide)
Preservative:	Sodium azide
Precaution of Use:	This product contains Sodium azide: a POISONOUS AND HAZARDOUS SUBSTANCE which should be handled by trained staff only.
Storage:	4 °C
Storage Comment:	Store at 4°C for up to one year. Aliquot to avoid repeated freezing and thawing.

Images



Western Blotting

Image 1. Western blot analysis of human brain tissue with DCLK1 polyclonal antibody at (Lane 1) 0.5 and (Lane 2) 1 ug/mL dilution.



Immunohistochemistry

Image 2. Immunohistochemical staining of rat brain tissue with DCLK1 polyclonal antibody at 25 ug/mL dilution.