

Datasheet for ABIN5576481
anti-DDA1 antibody (C-Term)[Go to Product page](#)

2 Images

Overview

Quantity:	100 µg
Target:	DDA1
Binding Specificity:	C-Term
Reactivity:	Human, Mouse, Rat
Host:	Rabbit
Clonality:	Polyclonal
Conjugate:	This DDA1 antibody is un-conjugated
Application:	ELISA, Western Blotting (WB), Immunohistochemistry (IHC)

Product Details

Purpose:	Rabbit polyclonal antibody raised against synthetic peptide of DDA1.
Immunogen:	A synthetic peptide corresponding to 18 amino acids at C-terminus of human DDA1.
Isotype:	IgG
Cross-Reactivity:	Human, Mouse, Rat

Target Details

Target:	DDA1
Alternative Name:	DDA1 (DDA1 Products)
Background:	Full Gene Name: DET1 and DDB1 associated 1 Synonyms: C19orf58,MGC2594,PCIA1

Target Details

Gene ID: 79016

Application Details

Application Notes: Western Blot (1 µg/mL)
Immunohistochemistry (5 µg/mL)
The optimal working dilution should be determined by the end user.

Restrictions: For Research Use only

Handling

Format: Liquid

Concentration: 1 mg/mL

Buffer: In PBS (0.02 % sodium azide)

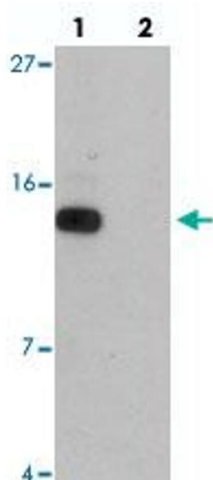
Preservative: Sodium azide

Precaution of Use: This product contains Sodium azide: a POISONOUS AND HAZARDOUS SUBSTANCE which should be handled by trained staff only.

Storage: 4 °C,-20 °C

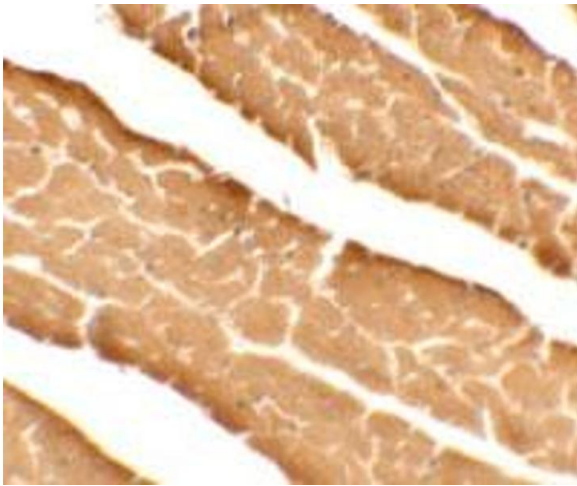
Storage Comment: Store at 4°C for three months. For long term storage store at -20°C.
Aliquot to avoid repeated freezing and thawing.

Images



Western Blotting

Image 1. Western blot analysis of DDA1 in mouse heart tissue with DDA1 polyclonal antibody at 1 µg/mL in (lane 1) the absence and (lane 2) the presence of blocking peptide.



Immunohistochemistry

Image 2. Immunohistochemical analysis of DDA1 in mouse heart tissue with DDA1 polyclonal antibody at 5 ug/mL.