

Datasheet for ABIN5576493
anti-DDT antibody (C-Term)[Go to Product page](#)

2 Images

1 Publication

Overview

Quantity:	100 µg
Target:	DDT
Binding Specificity:	C-Term
Reactivity:	Human, Mouse, Rat
Host:	Rabbit
Clonality:	Polyclonal
Conjugate:	This DDT antibody is un-conjugated
Application:	Western Blotting (WB), Immunohistochemistry (Paraffin-embedded Sections) (IHC (p))

Product Details

Purpose:	Rabbit polyclonal antibody raised against synthetic peptide of DDT.
Immunogen:	A synthetic peptide corresponding to amino acids at C-terminus of human DDT.
Isotype:	IgG
Specificity:	It different from the related mouse and rat sequence by two amino acids.
Cross-Reactivity:	Human, Mouse, Rat

Target Details

Target:	DDT
Alternative Name:	DDT (DDT Products)
Background:	Full Gene Name: D-dopachrome tautomerase

Target Details

Synonyms: DDCT

Gene ID: 1652

Application Details

Application Notes: Western Blot (1 µg/mL)
Immunohistochemistry (Formalin/PFA-fixed paraffin-embedded sections) (1 µg/mL)
The optimal working dilution should be determined by the end user.

Restrictions: For Research Use only

Handling

Format: Lyophilized

Buffer: Lyophilized from 0.9 mg NaCl, 0.2 mg Na₂HPO₄ (5 mg BSA, 0.05 mg sodium azide, 0.05 mg Thimerosal)

Preservative: Sodium azide, Thimerosal (Merthiolate)

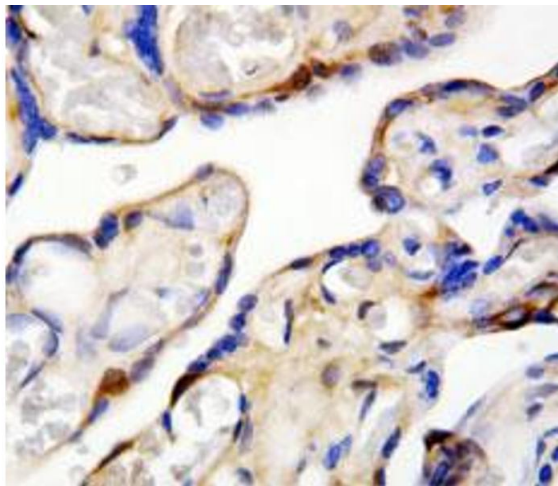
Precaution of Use: This product contains Thimerosal (Merthiolate) and Sodium azide: POISONOUS AND HAZARDOUS SUBSTANCES which should be handled by trained staff only.

Storage: -20 °C

Storage Comment: Store at -20°C on dry atmosphere.
After reconstitution with 200 µL of deionized water and concentration will be 500 µg/mL, store at -20°C or lower.
Aliquot to avoid repeated freezing and thawing.

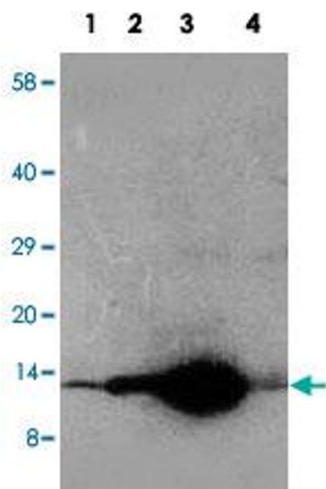
Publications

Product cited in: Yoshihisa, Rehman, Kondo, Shimizu: "Role of macrophage migration inhibitory factor in heat-induced apoptosis in keratinocytes." in: **FASEB journal : official publication of the Federation of American Societies for Experimental Biology**, Vol. 30, Issue 11, pp. 3870-3877, (2016) ([PubMed](#)).



Immunohistochemistry

Image 1. Immunohistochemical staining of paraffin-embedded human placenta specimen tissue section with DDT polyclonal antibody .



Western Blotting

Image 2. Western blot analysis of tissue extracts with DDT polyclonal antibody . Lane 1, rat brain tissue lysate. Lane 2, rat pancreas tissue lysate. Lane 3, rat liver tissue lysate. Lane 4, rat lung tissue lysate.