

Datasheet for ABIN5576533  
**anti-DEFB112 antibody (AA 15-43)**

## 2 Images

[Go to Product page](#)

## Overview

Quantity:	400 µL
Target:	DEFB112
Binding Specificity:	AA 15-43
Reactivity:	Human
Host:	Rabbit
Clonality:	Polyclonal
Conjugate:	This DEFB112 antibody is un-conjugated
Application:	Western Blotting (WB), Flow Cytometry (FACS)

## Product Details

Purpose:	Rabbit polyclonal antibody raised against synthetic peptide of DEFB112
Immunogen:	A synthetic peptide (conjugated with KLH) corresponding to amino acids 15-43 at N-terminal region at human DEFB112.
Cross-Reactivity:	Human

## Target Details

Target:	DEFB112
Alternative Name:	DEFB112 ( <a href="#">DEFB112 Products</a> )
Background:	Full Gene Name: defensin, beta 112 Synonyms: DEFB-12

## Target Details

Gene ID: 245915

## Application Details

Application Notes: Flow Cytometry (1:10-50)  
Western Blot (1:1000)  
The optimal working dilution should be determined by the end user.

Restrictions: For Research Use only

## Handling

Format: Liquid

Buffer: In PBS (0.09 % sodium azide)

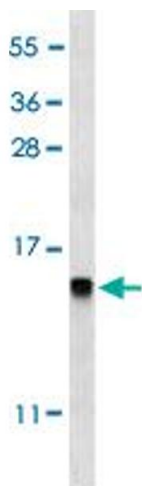
Preservative: Sodium azide

Precaution of Use: This product contains Sodium azide: a POISONOUS AND HAZARDOUS SUBSTANCE which should be handled by trained staff only.

Storage: 4 °C, -20 °C

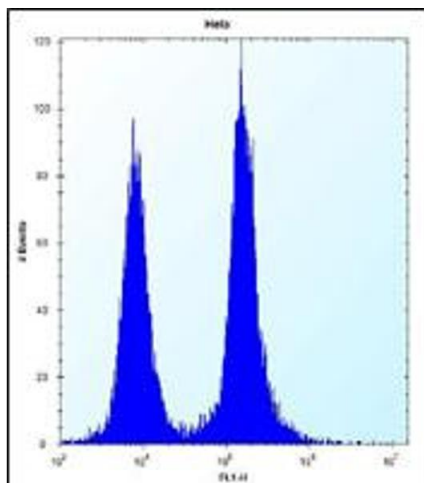
Storage Comment: Store at 4°C. For long term storage store at -20°C.  
Aliquot to avoid repeated freezing and thawing.

## Images



### Western Blotting

**Image 1.** Western blot analysis of DEFB112 polyclonal antibody in Hela cell line lysates (35ug/lane). DEFB112 (arrow) was detected using the purified polyclonal antibody.



### Flow Cytometry

**Image 2.** Flow cytometric analysis of Hela cells using DEFB112 polyclonal antibody (right histogram) compared to a negative control cell (left histogram). FITC-conjugated goat-anti-rabbit secondary antibodies were used for the analysis