



[Go to Product page](#)

Datasheet for ABIN5576596
anti-DIABLO antibody (C-Term)

2 Images

Overview

Quantity:	100 µL
Target:	DIABLO
Binding Specificity:	C-Term
Reactivity:	Human
Host:	Rabbit
Clonality:	Monoclonal
Conjugate:	This DIABLO antibody is un-conjugated
Application:	Western Blotting (WB), Immunohistochemistry (Paraffin-embedded Sections) (IHC (p))

Product Details

Purpose:	Recombinant rabbit monoclonal antibody raised against of human DIABLO.
Immunogen:	Original antibody is raised against a synthetic peptide corresponding to the C-terminus of human DIABLO (Diablo homolog, mitochondrial).
Clone:	RM271
Isotype:	IgG
Cross-Reactivity:	Human

Target Details

Target:	DIABLO
Alternative Name:	DIABLO (DIABLO Products)

Target Details

Background: Full Gene Name: diablo homolog (Drosophila)
Synonyms: DIABLO-S,FLJ10537,FLJ25049,SMAC,SMAC3

Gene ID: 56616

Pathways: [Apoptosis](#), [Caspase Cascade in Apoptosis](#), [Positive Regulation of Endopeptidase Activity](#)

Application Details

Application Notes: Immunohistochemistry (Formalin/PFA-fixed paraffin-embedded sections) (1:500-1:1000)
Western Blot (1:1000-1:2000)
The optimal working dilution should be determined by the end user.

Restrictions: For Research Use only

Handling

Format: Liquid

Buffer: In PBS (50 % glycerol, 1 % BSA, 0.09 % sodium azide)

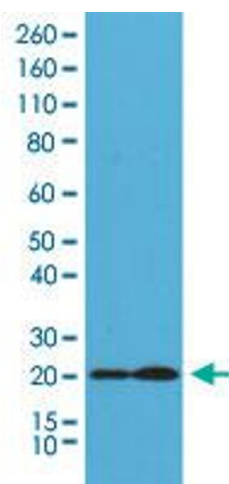
Preservative: Sodium azide

Precaution of Use: This product contains Sodium azide: a POISONOUS AND HAZARDOUS SUBSTANCE which should be handled by trained staff only.

Storage: -20 °C

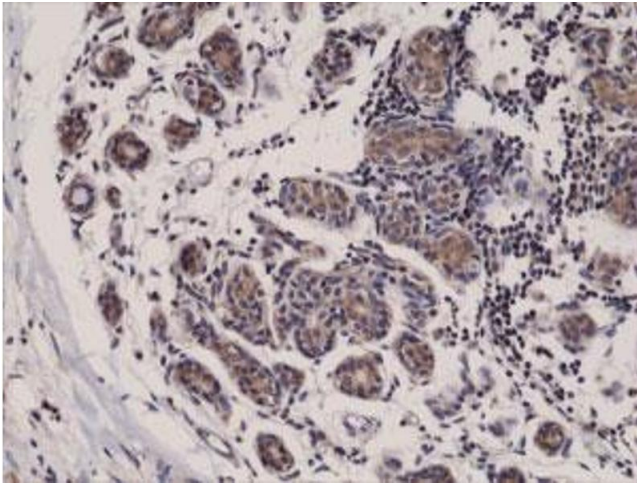
Storage Comment: Store at -20°C.
Aliquot to avoid repeated freezing and thawing.

Images



Western Blotting

Image 1. Western Blot (Cell lysate) analysis of HeLa cell (1) and MCF-7 cell (2) with DIABLO monoclonal antibody, clone RM271 .



Immunohistochemistry

Image 2. Immunohistochemical staining (Formalin-fixed paraffin-embedded sections) of human breast cancer with DIABLO monoclonal antibody, clone RM271 .