



Datasheet for ABIN5576652
anti-DLX2 antibody (N-Term)



[Go to Product page](#)

3 Images

Overview

Quantity:	100 µL
Target:	DLX2
Binding Specificity:	N-Term
Reactivity:	Human, Rat, Mouse
Host:	Rabbit
Clonality:	Polyclonal
Conjugate:	This DLX2 antibody is un-conjugated
Application:	Western Blotting (WB), Immunohistochemistry (Paraffin-embedded Sections) (IHC (p))

Product Details

Purpose:	Rabbit polyclonal antibody raised against synthetic peptide of human DLX2.
Immunogen:	A synthetic peptide corresponding to N-terminus of human DLX2.
Sequence:	MTGVFDSLVA DMHSTQIAAS STYHQHQPP SGGGAGPGGN SSSSSSLHKP
Cross-Reactivity:	Human, Mouse, Rat

Target Details

Target:	DLX2
Alternative Name:	DLX2 (DLX2 Products)
Background:	Full Gene Name: distal-less homeobox 2 Synonyms: TES-1, TES1

Target Details

Gene ID: 1746

NCBI Accession: [NM_004405](#)

Application Details

Application Notes: Immunohistochemistry (Formalin/PFA-fixed paraffin-embedded sections) (4-8 µg/mL)
Western Blot
The optimal working dilution should be determined by the end user.

Restrictions: For Research Use only

Handling

Format: Liquid

Buffer: In PBS (2 % sucrose, 0.09 % sodium azide).

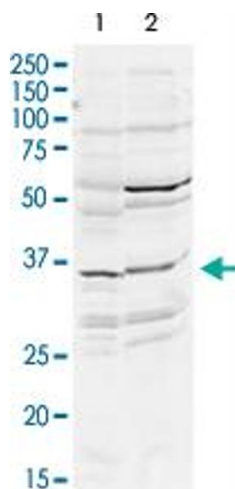
Preservative: Sodium azide

Precaution of Use: This product contains Sodium azide: a POISONOUS AND HAZARDOUS SUBSTANCE which should be handled by trained staff only.

Storage: 4 °C, -20 °C

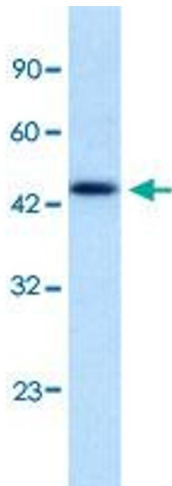
Storage Comment: Store at 4°C. For long term storage store at -20°C.
Aliquot to avoid repeated freezing and thawing.

Images



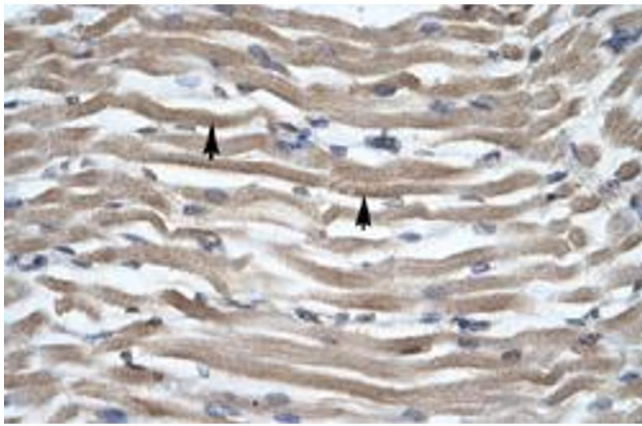
Western Blotting

Image 1. Western Blot analysis of mouse WT brain (A) and rat brain (B) tissue lysates with DLX2 polyclonal antibody at 2 µg/mL working concentration.



Western Blotting

Image 2. Western Blot analysis of Jurkat cell lysate with DLX2 polyclonal antibody at 1.25 ug/mL working concentration.



Immunohistochemistry

Image 3. Immunohistochemical staining (Formalin-fixed paraffin-embedded sections) of human muscle with DLX2 polyclonal antibody at 4-8 ug/mL working concentration.