



[Go to Product page](#)

Datasheet for ABIN5576653  
**anti-DLX2 antibody (C-Term)**

2 Images

Overview

Quantity:	100 µL
Target:	DLX2
Binding Specificity:	C-Term
Reactivity:	Human
Host:	Rabbit
Clonality:	Polyclonal
Conjugate:	This DLX2 antibody is un-conjugated
Application:	Western Blotting (WB), Immunohistochemistry (Paraffin-embedded Sections) (IHC (p))

Product Details

Purpose:	Rabbit polyclonal antibody raised against synthetic peptide of human DLX2.
Immunogen:	A synthetic peptide corresponding to C-terminus of human DLX2.
Sequence:	PASWDFGVPQ RMAGGGGPGS GGSGAGSSGS SPSSAASAFL GNYPWYHQTS
Cross-Reactivity:	Human

Target Details

Target:	DLX2
Alternative Name:	DLX2 ( <a href="#">DLX2 Products</a> )
Background:	Full Gene Name: distal-less homeobox 2 Synonyms: TES-1, TES1

## Target Details

Gene ID: 1746

NCBI Accession: [NM\\_004405](#)

## Application Details

Application Notes: Immunohistochemistry (Formalin/PFA-fixed paraffin-embedded sections) (4-8 µg/mL)  
Western Blot (2.5 µg/mL)  
The optimal working dilution should be determined by the end user.

Restrictions: For Research Use only

## Handling

Format: Liquid

Buffer: In PBS (2 % sucrose, 0.09 % sodium azide).

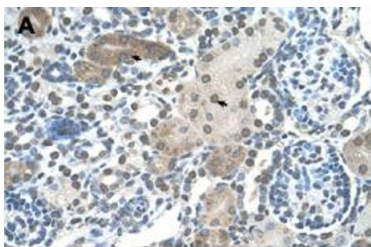
Preservative: Sodium azide

Precaution of Use: This product contains Sodium azide: a POISONOUS AND HAZARDOUS SUBSTANCE which should be handled by trained staff only.

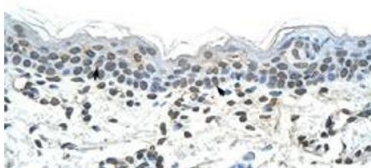
Storage: 4 °C, -20 °C

Storage Comment: Store at 4°C. For long term storage store at -20°C.  
Aliquot to avoid repeated freezing and thawing.

## Images

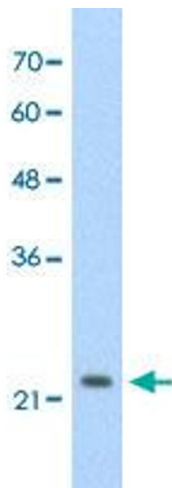


**B**



### Immunohistochemistry

**Image 1.** Immunohistochemical staining (Formalin-fixed paraffin-embedded sections) of human kidney (A) and human skin (B) with DLX2 polyclonal antibody at 4-8 µg/mL working concentration.



### Western Blotting

**Image 2.** Western Blot analysis of HepG2 cell lysate with DLX2 polyclonal antibody at 2.5 ug/mL working concentration.