

Datasheet for ABIN5576813

anti-DPP9 antibody[Go to Product page](#)**1** Image

Overview

Quantity:	50 µg
Target:	DPP9
Reactivity:	Human, Mouse, Monkey, Dog, Cow, Horse
Host:	Rabbit
Clonality:	Polyclonal
Conjugate:	This DPP9 antibody is un-conjugated
Application:	Immunohistochemistry (Paraffin-embedded Sections) (IHC (p))

Product Details

Purpose:	Rabbit polyclonal antibody raised against synthetic peptide of DPP9.
Immunogen:	A synthetic peptide (conjugated with KLH) corresponding to human DPP9.
Specificity:	Internal domain of human.
Cross-Reactivity:	Cow, Dog, Horse, Human, Monkey, Mouse

Target Details

Target:	DPP9
Alternative Name:	DPP9 (DPP9 Products)
Background:	Full Gene Name: dipeptidyl-peptidase 9 Synonyms: DKFZp762F117,DPRP2,FLJ16073
Gene ID:	91039

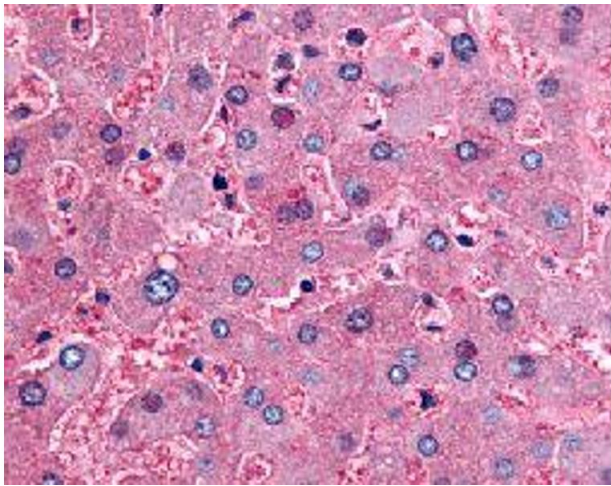
Application Details

Application Notes:	Immunohistochemistry (Formalin/PFA-fixed paraffin-embedded sections) (10 µg/mL) The optimal working dilution should be determined by the end user.
Restrictions:	For Research Use only

Handling

Format:	Liquid
Buffer:	In PBS (0.09 % sodium azide)
Preservative:	Sodium azide
Precaution of Use:	This product contains Sodium azide: a POISONOUS AND HAZARDOUS SUBSTANCE which should be handled by trained staff only.
Storage:	4 °C,-80 °C
Storage Comment:	Store at 4°C. For long term storage store at -80°C. Aliquot to avoid repeated freezing and thawing.

Images



Immunohistochemistry

Image 1. Immunohistochemical (Formalin/PFA-fixed paraffin-embedded sections) staining in human liver with DPP9 polyclonal antibody .