

Datasheet for ABIN5576829

anti-Dopamine d2 Receptor antibody (Cytoplasmic Domain)[Go to Product page](#)**1** Image

Overview

Quantity:	50 µg
Target:	Dopamine d2 Receptor (DRD2)
Binding Specificity:	Cytoplasmic Domain
Reactivity:	Human, Chimpanzee, Gorilla
Host:	Rabbit
Clonality:	Polyclonal
Conjugate:	This Dopamine d2 Receptor antibody is un-conjugated
Application:	Immunohistochemistry (Paraffin-embedded Sections) (IHC (p))

Product Details

Purpose:	Rabbit polyclonal antibody raised against synthetic peptide of DRD2.
Immunogen:	A synthetic peptide corresponding to 19 amino acid at cytoplasmic domain of human DRD2.
Specificity:	BLAST analysis of the peptide immunogen showed no homology with other human proteins, except ZNF57 (42 %).
Cross-Reactivity:	Chimpanzee, Gorilla, Human
Cross-Reactivity (Details):	BLAST analysis of the peptide immunogen showed no homology with other human proteins, except ZNF57 (42 %).

Target Details

Target:	Dopamine d2 Receptor (DRD2)
---------	-----------------------------

Target Details

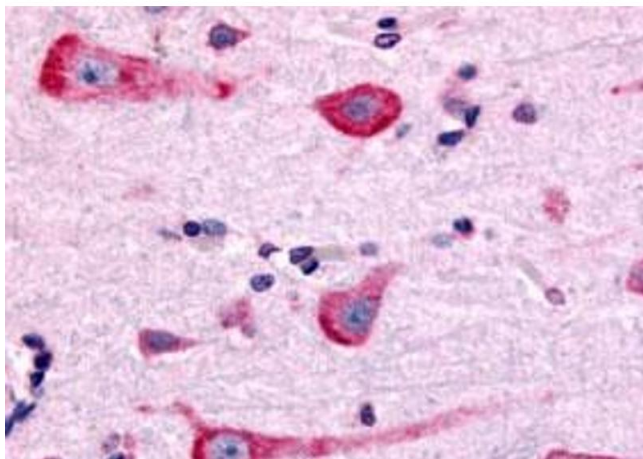
Alternative Name:	DRD2 (DRD2 Products)
Background:	Full Gene Name: dopamine receptor D2 Synonyms: D2DR,D2R
Gene ID:	1813
Pathways:	Positive Regulation of Peptide Hormone Secretion , Negative Regulation of Hormone Secretion , cAMP Metabolic Process , Inositol Metabolic Process , Regulation of G-Protein Coupled Receptor Protein Signaling , Feeding Behaviour , Negative Regulation of Transporter Activity , Regulation of long-term Neuronal Synaptic Plasticity

Application Details

Application Notes:	Immunohistochemistry (Formalin/PFA-fixed paraffin-embedded sections) (3-4 µg/mL) The optimal working dilution should be determined by the end user.
Restrictions:	For Research Use only

Handling

Format:	Liquid
Buffer:	In PBS (0.09 % sodium azide)
Preservative:	Sodium azide
Precaution of Use:	This product contains Sodium azide: a POISONOUS AND HAZARDOUS SUBSTANCE which should be handled by trained staff only.
Storage:	4 °C,-80 °C
Storage Comment:	Store at 4°C. For long term storage store at -80°C. Aliquot to avoid repeated freezing and thawing.



Immunohistochemistry

Image 1. Immunohistochemistry (Formalin/PFA-fixed paraffin-embedded sections) of human brain, neurons and glia with DRD2 polyclonal antibody . Immunohistochemistry of formalin-fixed, paraffin-embedded tissue after heat-induced antigen retrieval.