



[Go to Product page](#)

Datasheet for ABIN5576834

anti-DRD3 antibody (Cytoplasmic Domain)

1 Image

Overview

Quantity:	50 µg
Target:	DRD3
Binding Specificity:	Cytoplasmic Domain
Reactivity:	Human, Mouse, Dog, Horse, Pig, Monkey, Hamster, Chimpanzee
Host:	Rabbit
Clonality:	Polyclonal
Conjugate:	This DRD3 antibody is un-conjugated
Application:	Immunohistochemistry (Paraffin-embedded Sections) (IHC (p))

Product Details

Purpose:	Rabbit polyclonal antibody raised against synthetic peptide of DRD3.
Immunogen:	A synthetic peptide corresponding to 18 amino acid at cytoplasmic domain of human DRD3.
Specificity:	BLAST analysis of the peptide immunogen showed no homology with other human proteins.
Cross-Reactivity:	Chimpanzee, Dog, Hamster, Horse, Human, Monkey, Mouse, Pig
Cross-Reactivity (Details):	BLAST analysis of the peptide immunogen showed no homology with other human proteins.

Target Details

Target:	DRD3
Alternative Name:	DRD3 (DRD3 Products)
Background:	Full Gene Name: dopamine receptor D3

Target Details

Synonyms: D3DR,ETM1,FET1,MGC149204,MGC149205

Gene ID: 1814

Pathways: [Regulation of Systemic Arterial Blood Pressure by Hormones](#), [cAMP Metabolic Process](#), [Regulation of G-Protein Coupled Receptor Protein Signaling](#), [Proton Transport](#), [Negative Regulation of Transporter Activity](#)

Application Details

Application Notes: Immunohistochemistry (Formalin/PFA-fixed paraffin-embedded sections) (16-32 µg/mL)
The optimal working dilution should be determined by the end user.

Restrictions: For Research Use only

Handling

Format: Liquid

Buffer: In PBS (0.09 % sodium azide)

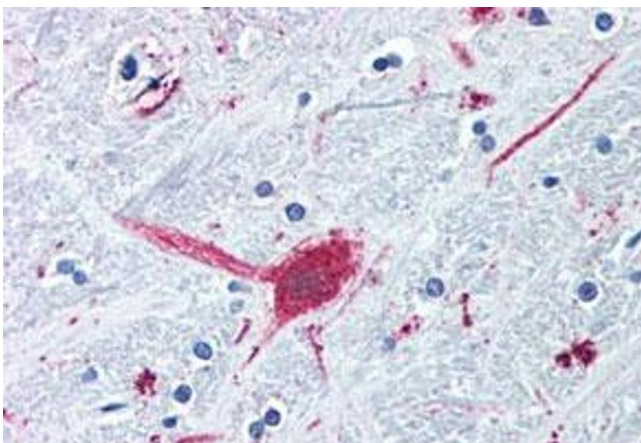
Preservative: Sodium azide

Precaution of Use: This product contains Sodium azide: a POISONOUS AND HAZARDOUS SUBSTANCE which should be handled by trained staff only.

Storage: 4 °C,-80 °C

Storage Comment: Store at 4°C. For long term storage store at -80°C.
Aliquot to avoid repeated freezing and thawing.

Images



Immunohistochemistry

Image 1. Immunohistochemistry (Formalin/PFA-fixed paraffin-embedded sections) of human brain, globus pallidus with DRD3 polyclonal antibody. Immunohistochemistry of formalin-fixed, paraffin-embedded tissue after heat-induced antigen retrieval.