

Datasheet for ABIN5576837  
**anti-DRD5 antibody (Cytoplasmic Domain)**[Go to Product page](#)

## 1 Image

## Overview

Quantity:	50 µg
Target:	DRD5
Binding Specificity:	Cytoplasmic Domain
Reactivity:	Human, Dog, Gorilla
Host:	Rabbit
Clonality:	Polyclonal
Conjugate:	This DRD5 antibody is un-conjugated
Application:	Immunohistochemistry (Paraffin-embedded Sections) (IHC (p))

## Product Details

Purpose:	Rabbit polyclonal antibody raised against synthetic peptide of DRD5.
Immunogen:	A synthetic peptide corresponding to 16 amino acid at cytoplasmic domain of human DRD5.
Specificity:	BLAST analysis of the peptide immunogen showed no homology with other human proteins.
Cross-Reactivity:	Dog, Gorilla, Human
Cross-Reactivity (Details):	BLAST analysis of the peptide immunogen showed no homology with other human proteins.

## Target Details

Target:	DRD5
Alternative Name:	DRD5 ( <a href="#">DRD5 Products</a> )
Background:	Full Gene Name: dopamine receptor D5

## Target Details

	Synonyms: DBDR,DRD1B,DRD1L2,MGC10601
Gene ID:	1816
Pathways:	<a href="#">Regulation of Systemic Arterial Blood Pressure by Hormones</a> , <a href="#">cAMP Metabolic Process</a> , <a href="#">Regulation of long-term Neuronal Synaptic Plasticity</a>

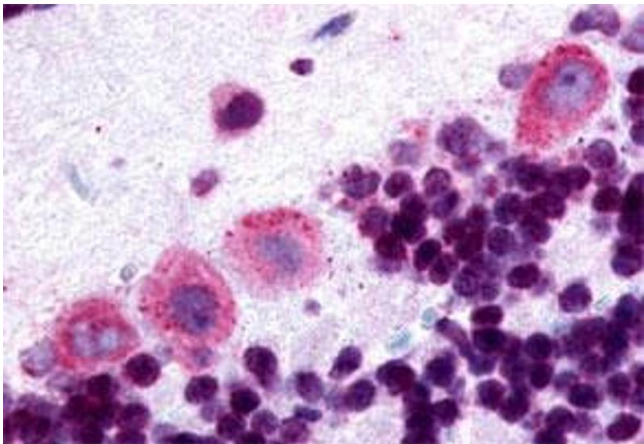
## Application Details

Application Notes:	Immunohistochemistry (Formalin/PFA-fixed paraffin-embedded sections) (20 µg/mL) The optimal working dilution should be determined by the end user.
Restrictions:	For Research Use only

## Handling

Format:	Liquid
Buffer:	In PBS (0.09 % sodium azide)
Preservative:	Sodium azide
Precaution of Use:	This product contains Sodium azide: a POISONOUS AND HAZARDOUS SUBSTANCE which should be handled by trained staff only.
Storage:	4 °C,-80 °C
Storage Comment:	Store at 4°C. For long term storage store at -80°C. Aliquot to avoid repeated freezing and thawing.

## Images



### Immunohistochemistry

**Image 1.** Immunohistochemistry (Formalin/PFA-fixed paraffin-embedded sections) of human brain, cerebellum with DRD5 polyclonal antibody . Immunohistochemistry of formalin-fixed, paraffin-embedded tissue after heat-induced antigen retrieval.