

Datasheet for ABIN5576890

anti-DUSP23 antibody (Internal Region)**2** Images[Go to Product page](#)

Overview

Quantity:	50 µg
Target:	DUSP23
Binding Specificity:	Internal Region
Reactivity:	Human, Gorilla, Gibbon
Host:	Rabbit
Clonality:	Polyclonal
Conjugate:	This DUSP23 antibody is un-conjugated
Application:	Immunohistochemistry (Paraffin-embedded Sections) (IHC (p))

Product Details

Purpose:	Rabbit polyclonal antibody raised against synthetic peptide of DUSP23.
Immunogen:	A synthetic peptide corresponding to 18 amino acids at internal region of human DUSP23.
Specificity:	BLAST analysis of the peptide immunogen showed no homology with other human proteins.
Cross-Reactivity:	Gibbon, Gorilla, Human
Cross-Reactivity (Details):	BLAST analysis of the peptide immunogen showed no homology with other human proteins.

Target Details

Target:	DUSP23
Alternative Name:	DUSP23 (DUSP23 Products)
Background:	Full Gene Name: dual specificity phosphatase 23

Target Details

Synonyms: DUSP25,FLJ20442,LDP-3,MOSP,RP11-190A12.1,VHZ

Gene ID: 54935

Application Details

Application Notes: Immunohistochemistry (Formalin/PFA-fixed paraffin-embedded sections) (10-20 µg/mL)
The optimal working dilution should be determined by the end user.

Restrictions: For Research Use only

Handling

Format: Liquid

Buffer: In PBS (0.09 % sodium azide)

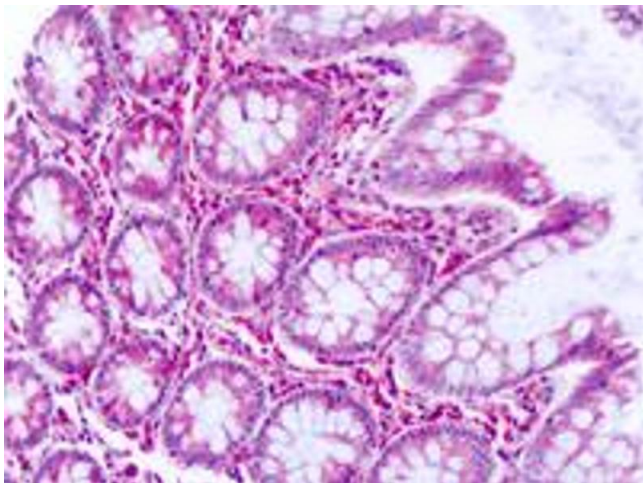
Preservative: Sodium azide

Precaution of Use: This product contains Sodium azide: a POISONOUS AND HAZARDOUS SUBSTANCE which should be handled by trained staff only.

Storage: 4 °C,-80 °C

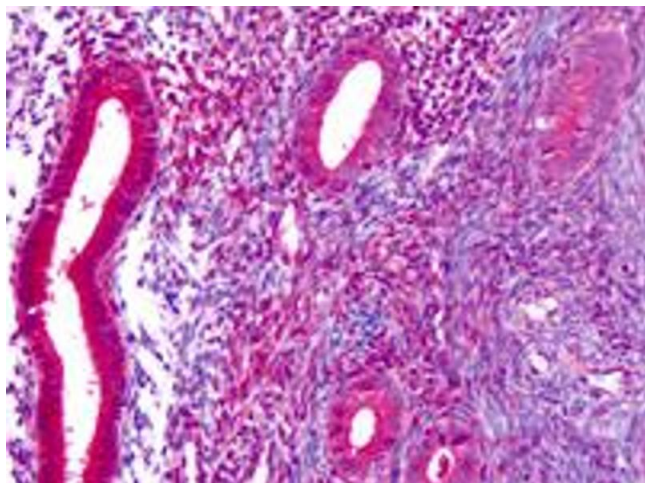
Storage Comment: Store at 4°C. For long term storage store at -80°C.
Aliquot to avoid repeated freezing and thawing.

Images



Immunohistochemistry

Image 1. Immunohistochemistry (Formalin/PFA-fixed paraffin-embedded sections) of human colon epithelium with DUSP23 polyclonal antibody . Immunohistochemistry of formalin-fixed, paraffin-embedded tissue after heat-induced antigen retrieval.



Immunohistochemistry

Image 2. Immunohistochemistry (Formalin/PFA-fixed paraffin-embedded sections) of human uterus endometrium with DUSP23 polyclonal antibody . Immunohistochemistry of formalin-fixed, paraffin-embedded tissue after heat-induced antigen retrieval.