

Datasheet for ABIN5576891

**anti-DUSP23 antibody**[Go to Product page](#)**1** Image

## Overview

Quantity:	50 µg
Target:	DUSP23
Reactivity:	Human, Mouse, Cow, Horse, Monkey, Rat, Gorilla
Host:	Rabbit
Clonality:	Polyclonal
Conjugate:	This DUSP23 antibody is un-conjugated
Application:	Immunohistochemistry (Paraffin-embedded Sections) (IHC (p))

## Product Details

Purpose:	Rabbit polyclonal antibody raised against synthetic peptide of DUSP23.
Immunogen:	A synthetic peptide (conjugated with KLH) corresponding to human DUSP23.
Specificity:	Internal domain of human.
Cross-Reactivity:	Cow, Gorilla, Horse, Human, Monkey, Mouse, Rat

## Target Details

Target:	DUSP23
Alternative Name:	DUSP23 ( <a href="#">DUSP23 Products</a> )
Background:	Full Gene Name: dual specificity phosphatase 23 Synonyms: DUSP25,FLJ20442,LDP-3,MOSP,RP11-190A12.1,VHZ
Gene ID:	54935

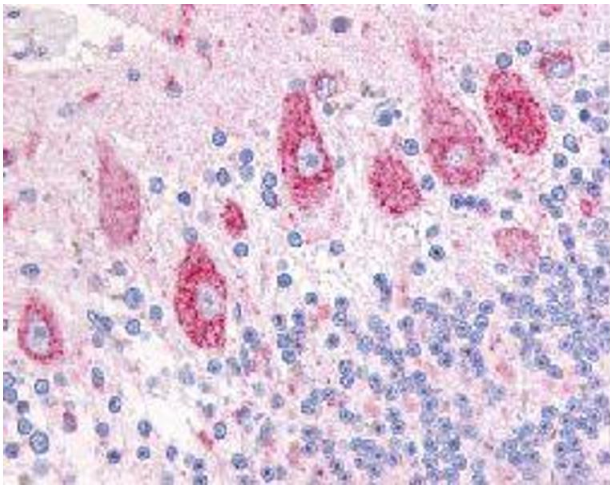
Application Details

Application Notes:	Immunohistochemistry (Formalin/PFA-fixed paraffin-embedded sections) (10 µg/mL) The optimal working dilution should be determined by the end user.
Restrictions:	For Research Use only

Handling

Format:	Liquid
Buffer:	In PBS (0.09 % sodium azide)
Preservative:	Sodium azide
Precaution of Use:	This product contains Sodium azide: a POISONOUS AND HAZARDOUS SUBSTANCE which should be handled by trained staff only.
Storage:	4 °C,-80 °C
Storage Comment:	Store at 4°C. For long term storage store at -80°C. Aliquot to avoid repeated freezing and thawing.

Images



**Immunohistochemistry**

**Image 1.** Immunohistochemical (Formalin/PFA-fixed paraffin-embedded sections) staining in human cerebellum with DUSP23 polyclonal antibody .