



Datasheet for ABIN5576956
anti-HPV16 E7 antibody



[Go to Product page](#)

3 Images

Overview

Quantity:	100 µL
Target:	HPV16 E7 (HPV-16 E7)
Reactivity:	Human Papillomavirus (HPV)
Host:	Mouse
Clonality:	Monoclonal
Conjugate:	This HPV16 E7 antibody is un-conjugated
Application:	Western Blotting (WB), ELISA, Immunohistochemistry (Paraffin-embedded Sections) (IHC (p))

Product Details

Purpose:	Mouse monoclonal antibody raised against partial recombinant E7.
Immunogen:	Recombinant protein corresponding to E7 transforming protein (human papillomavirus type 16).
Clone:	6F3
Isotype:	IgG1
Cross-Reactivity:	Human

Target Details

Target:	HPV16 E7 (HPV-16 E7)
Alternative Name:	E7 (HPV-16 E7 Products)
Target Type:	Viral Protein

Target Details

Background: Full Gene Name: transforming protein

Gene ID: 1489079

Application Details

Application Notes: ELISA (1:10000)
Western Blot (1:500-1:2000)
Immunohistochemistry (1:200-1:1000)
The optimal working dilution should be determined by the end user.

Restrictions: For Research Use only

Handling

Format: Liquid

Buffer: In ascites (0.03 % sodium azide)

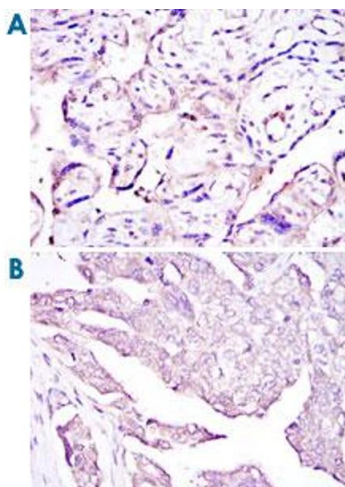
Preservative: Sodium azide

Precaution of Use: This product contains Sodium azide: a POISONOUS AND HAZARDOUS SUBSTANCE which should be handled by trained staff only.

Storage: 4 °C, -20 °C

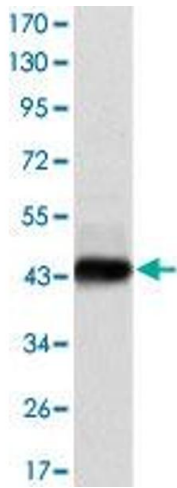
Storage Comment: Store at 4°C. For long term storage store at -20°C.
Aliquot to avoid repeated freezing and thawing.

Images



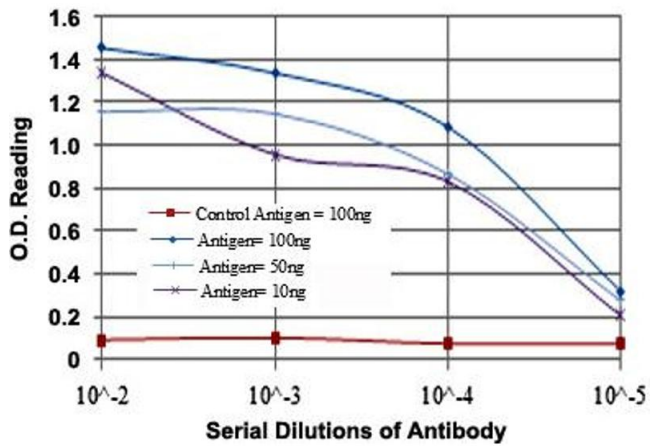
Immunohistochemistry

Image 1. Immunohistochemical analysis of paraffin-embedded human placenta tissues (A) and ovarian cancer (B) using E7 monoclonal antibody, clone 6F3 with DAB staining.



Western Blotting

Image 2. Western blot analysis using E7 monoclonal antibody, clone 6F3 against recombinant protein.



ELISA

Image 3. ELISA measurement of E7 monoclonal antibody, clone 6F3 .