

Datasheet for ABIN5576963
anti-EBI3 antibody (C-Term)[Go to Product page](#)

2 Images

Overview

Quantity:	100 µg
Target:	EBI3 (IL-27b)
Binding Specificity:	C-Term
Reactivity:	Human, Mouse
Host:	Rabbit
Clonality:	Polyclonal
Conjugate:	This EBI3 antibody is un-conjugated
Application:	Western Blotting (WB), ELISA, Immunohistochemistry (IHC)

Product Details

Purpose:	Rabbit polyclonal antibody raised against synthetic peptide of EBI3.
Immunogen:	A synthetic peptide corresponding to C-terminus 16 amino acids from of human EBI3.
Cross-Reactivity:	Human, Mouse

Target Details

Target:	EBI3 (IL-27b)
Alternative Name:	EBI3 (IL-27b Products)
Target Type:	Viral Protein
Background:	Full Gene Name: Epstein-Barr virus induced 3 Synonyms: IL27B

Target Details

Gene ID: 10148

Application Details

Application Notes: Western Blot (1-2 µg/mL)
The optimal working dilution should be determined by the end user.

Restrictions: For Research Use only

Handling

Format: Liquid

Buffer: In PBS (0.02 % sodium azide)

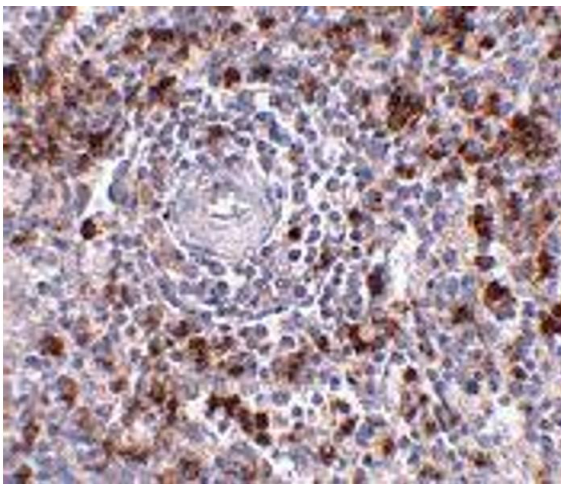
Preservative: Sodium azide

Precaution of Use: This product contains Sodium azide: a POISONOUS AND HAZARDOUS SUBSTANCE which should be handled by trained staff only.

Storage: 4 °C, -20 °C

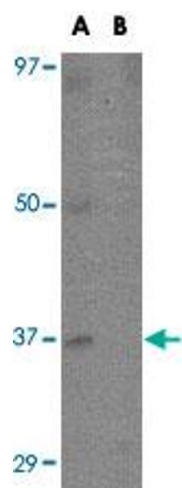
Storage Comment: Store at 4°C for three months. For long term storage store at -20°C.
Aliquot to avoid repeated freezing and thawing.

Images



Immunohistochemistry

Image 1. Immunohistochemistry of EBI3 in human spleen tissue with EBI3 polyclonal antibody at 2.5 ug/mL .



Western Blotting

Image 2. Western blot analysis of EBI3 in K-562 cell lysate with EBI3 polyclonal antibody at 1 ug/mL in (A) the absence and (B) the presence of blocking peptide.