



Datasheet for ABIN5576985
anti-EDIL3 antibody (AA 200-350)



[Go to Product page](#)

1 Image

Overview

Quantity:	100 µL
Target:	EDIL3 (DEL1)
Binding Specificity:	AA 200-350
Reactivity:	Human, Mouse
Host:	Rabbit
Clonality:	Polyclonal
Conjugate:	This EDIL3 antibody is un-conjugated
Application:	Western Blotting (WB), Immunofluorescence (IF), Immunocytochemistry (ICC)

Product Details

Purpose:	Rabbit polyclonal antibody raised against synthetic peptide of EDIL3.
Immunogen:	A synthetic peptide corresponding to amino acids 200-350 of human EDIL3.
Specificity:	100 % sequence identity with human protein, 94 % sequence with mouse protein. This antibody is useful for Western blot analysis where a band can be seen at ~53 KDa.
Cross-Reactivity:	Human, Mouse

Target Details

Target:	EDIL3 (DEL1)
Alternative Name:	EDIL3 (DEL1 Products)
Background:	Full Gene Name: EGF-like repeats and discoidin I-like domains 3

Target Details

Synonyms: DEL1,MGC26287

Gene ID: 10085

Application Details

Application Notes: Immunocytochemistry (1:100)
Immunofluorescence (1:100)
Western Blot (2 µg/mL)
The optimal working dilution should be determined by the end user.

Restrictions: For Research Use only

Handling

Format: Liquid

Buffer: In PBS (30 % glycerol, 0.09 % sodium azide)

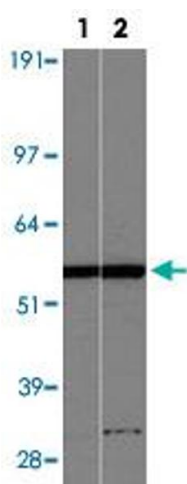
Preservative: Sodium azide

Precaution of Use: This product contains Sodium azide: a POISONOUS AND HAZARDOUS SUBSTANCE which should be handled by trained staff only.

Storage: 4 °C, -20 °C

Storage Comment: Store at 4°C for short term. For long term storage store at -20°C.
Aliquot to avoid repeated freezing and thawing.

Images



Western Blotting

Image 1. Western blot with EDIL3 polyclonal antibody . Lane 1 : normal human brain Lane 2 : normal mouse brain.