

Datasheet for ABIN5576991

**anti-Endothelin-1 Receptor antibody (Extracellular Domain)**[Go to Product page](#)**1** Image

## Overview

Quantity:	50 µg
Target:	Endothelin-1 Receptor (EDNRA)
Binding Specificity:	Extracellular Domain
Reactivity:	Human, Mouse, Cow, Dog, Pig, Horse, Sheep, Rabbit, Gorilla
Host:	Rabbit
Clonality:	Polyclonal
Conjugate:	This Endothelin-1 Receptor antibody is un-conjugated
Application:	Immunohistochemistry (Paraffin-embedded Sections) (IHC (p))

## Product Details

Purpose:	Rabbit polyclonal antibody raised against synthetic peptide of EDNRA.
Immunogen:	A synthetic peptide corresponding to 18 amino acid at extracellular domain of human EDNRA.
Specificity:	BLAST analysis of the peptide immunogen showed no homology with other human proteins.
Cross-Reactivity:	Cow, Dog, Gorilla, Horse, Human, Mouse, Pig, Rabbit, Sheep
Cross-Reactivity (Details):	BLAST analysis of the peptide immunogen showed no homology with other human proteins.

## Target Details

Target:	Endothelin-1 Receptor (EDNRA)
Alternative Name:	EDNRA ( <a href="#">EDNRA Products</a> )
Background:	Full Gene Name: endothelin receptor type A

## Target Details

	Synonyms: ETA,ETRA
Gene ID:	1909
Pathways:	<a href="#">cAMP Metabolic Process</a>

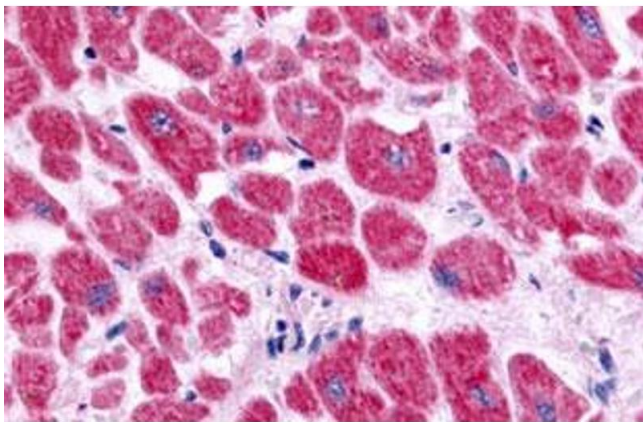
## Application Details

Application Notes:	Immunohistochemistry (Formalin/PFA-fixed paraffin-embedded sections) (5 µg/mL) The optimal working dilution should be determined by the end user.
Restrictions:	For Research Use only

## Handling

Format:	Liquid
Buffer:	In PBS (0.09 % sodium azide)
Preservative:	Sodium azide
Precaution of Use:	This product contains Sodium azide: a POISONOUS AND HAZARDOUS SUBSTANCE which should be handled by trained staff only.
Storage:	4 °C,-80 °C
Storage Comment:	Store at 4°C. For long term storage store at -80°C. Aliquot to avoid repeated freezing and thawing.

## Images



### Immunohistochemistry

**Image 1.** Immunohistochemistry (Formalin/PFA-fixed paraffin-embedded sections) of human heart, cardiac myocytes with EDNRA polyclonal antibody . Immunohistochemistry of formalin-fixed, paraffin-embedded tissue after heat-induced antigen retrieval.