

Datasheet for ABIN5577029
anti-Ephrin B1 antibody (pTyr324)

2 Images

[Go to Product page](#)

Overview

Quantity:	100 µL
Target:	Ephrin B1 (EFNB1)
Binding Specificity:	pTyr324
Reactivity:	Human, Mouse, Rat
Host:	Rabbit
Clonality:	Polyclonal
Conjugate:	This Ephrin B1 antibody is un-conjugated
Application:	Western Blotting (WB), Immunohistochemistry (Paraffin-embedded Sections) (IHC (p))

Product Details

Purpose:	Rabbit polyclonal antibody raised against synthetic phosphopeptide of human EFNB1/EFNB2/EFNB3.
Immunogen:	Synthetic phosphopeptide (conjugated with KLH) corresponding to residues surrounding Y324 of human EFNB1/EFNB2/EFNB3.
Specificity:	This antibody detects endogenous levels of EFNB1/EFNB2/EFNB3 only when phosphorylated at tyrosine 324.
Cross-Reactivity:	Human, Mouse, Rat

Target Details

Target:	Ephrin B1 (EFNB1)
Alternative Name:	EFNB1 (EFNB1 Products)

Target Details

Background:	Full Gene Name: ephrin-B1 Synonyms: CFND,CFNS,EFL3,EPLG2,Elk-L,LERK2,MGC8782
Gene ID:	1947, 1948, 1949
Pathways:	RTK Signaling

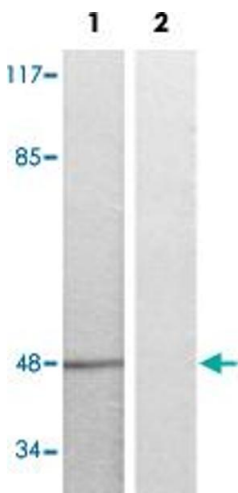
Application Details

Application Notes:	Immunohistochemistry (1:50-1:100) Western Blot (1:500-1000) The optimal working dilution should be determined by the end user.
Restrictions:	For Research Use only

Handling

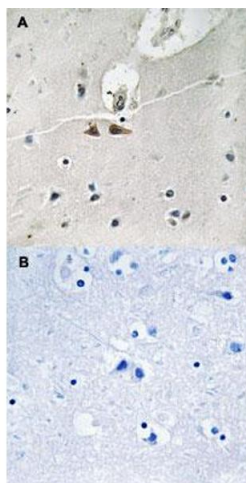
Format:	Liquid
Buffer:	In PBS, pH 7.4 (without Mg ²⁺ and Ca ²⁺), (50 % glycerol, 0.02 % sodium azide)
Preservative:	Sodium azide
Precaution of Use:	This product contains Sodium azide: a POISONOUS AND HAZARDOUS SUBSTANCE which should be handled by trained staff only.
Storage:	-20 °C
Storage Comment:	Store at -20°C. Avoid repeated freezing and thawing.

Images



Western Blotting

Image 1. Western blot analysis of Lane 1: serum treated K562 cells, Lane 2: antigen-specific peptide treated K562 cells with EFNB1/EFNB2/EFNB3 (phospho Y324) polyclonal antibody at 1:500-1000 dilution.



Immunohistochemistry

Image 2. Immunohistochemical staining of human brain tissue by EFNB1/EFNB2/EFNB3 (phospho Y324) polyclonal antibody without blocking peptide (A) or preincubated with blocking peptide (B) under 1:50-1:100 dilution.