



Datasheet for ABIN5577052  
**anti-EGFL8 antibody (C-Term)**



[Go to Product page](#)

3 Images

Overview

Quantity:	100 µL
Target:	EGFL8
Binding Specificity:	C-Term
Reactivity:	Human
Host:	Rabbit
Clonality:	Polyclonal
Conjugate:	This EGFL8 antibody is un-conjugated
Application:	Western Blotting (WB), Immunohistochemistry (Paraffin-embedded Sections) (IHC (p))

Product Details

Purpose:	Rabbit polyclonal antibody raised against synthetic peptide of human EGFL8.
Immunogen:	A synthetic peptide corresponding to C-terminus of human EGFL8.
Sequence:	QAGAWVRAVL PVPPEELQPE QVAELWGRGD RIESLSDQVL LLEERLGACS
Cross-Reactivity:	Human

Target Details

Target:	EGFL8
Alternative Name:	EGFL8 ( <a href="#">EGFL8 Products</a> )
Background:	Full Gene Name: EGF-like-domain, multiple 8 Synonyms: C6orf8,FLJ44493,MGC44938,MGC59719,NG3

## Target Details

Gene ID: 80864

NCBI Accession: [NM\\_030652](#)

## Application Details

Application Notes: Immunohistochemistry (Formalin/PFA-fixed paraffin-embedded sections) (4-8 µg/mL)  
Western Blot  
The optimal working dilution should be determined by the end user.

Restrictions: For Research Use only

## Handling

Format: Liquid

Buffer: In PBS (2 % sucrose, 0.09 % sodium azide).

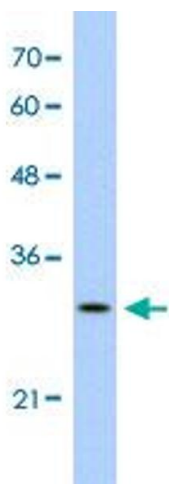
Preservative: Sodium azide

Precaution of Use: This product contains Sodium azide: a POISONOUS AND HAZARDOUS SUBSTANCE which should be handled by trained staff only.

Storage: 4 °C,-20 °C

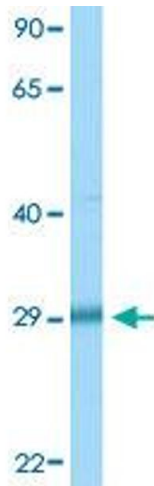
Storage Comment: Store at 4°C. For long term storage store at -20°C.  
Aliquot to avoid repeated freezing and thawing.

## Images



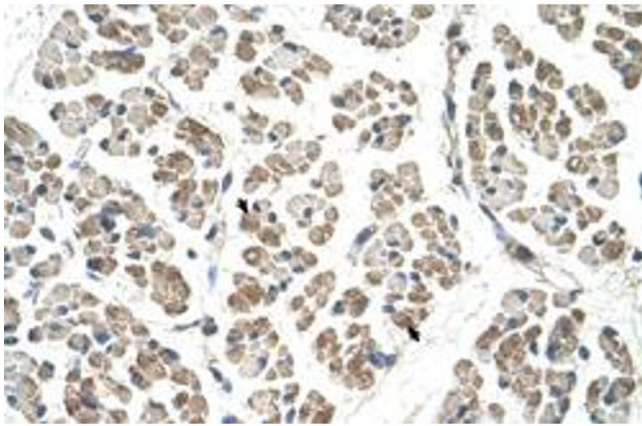
### Western Blotting

**Image 1.** Western Blot analysis of Jurkat cell lysate with EGFL8 polyclonal antibody at 1.25 µg/mL working concentration.



### Western Blotting

**Image 2.** Western Blot analysis of HepG2 cell lysate with EGFL8 polyclonal antibody at 1 ug/mL working concentration.



### Immunohistochemistry

**Image 3.** Immunohistochemical staining (Formalin-fixed paraffin-embedded sections) of human muscle with EGFL8 polyclonal antibody at 4-8 ug/mL working concentration.