



Datasheet for ABIN5577131

anti-Serine (Or Cysteine) Peptidase Inhibitor, Clade B, Member 1a (SERPINB1A) antibody



[Go to Product page](#)

1 Image

Overview

Quantity:	100 µg
Target:	Serine (Or Cysteine) Peptidase Inhibitor, Clade B, Member 1a (SERPINB1A)
Reactivity:	Rat
Host:	Sheep
Clonality:	Polyclonal
Conjugate:	Un-conjugated
Application:	Immunoprecipitation (IP), Western Blotting (WB)

Product Details

Purpose:	Sheep polyclonal antibody raised against a recombinant EIA.
Immunogen:	Recombinant GST fusion protein corresponding to EIA.
Cross-Reactivity:	Rat
Characteristics:	Antibody Reactive Against Recombinant Protein.

Target Details

Target:	Serine (Or Cysteine) Peptidase Inhibitor, Clade B, Member 1a (SERPINB1A)
Alternative Name:	EIA (SERPINB1A Products)

Application Details

Application Notes:	Western Blot (1-10 µg/mL)
--------------------	---------------------------

Application Details

The optimal working dilution should be determined by the end user.

Restrictions: For Research Use only

Handling

Format: Liquid

Buffer: In PBS (0.08 % sodium azide)

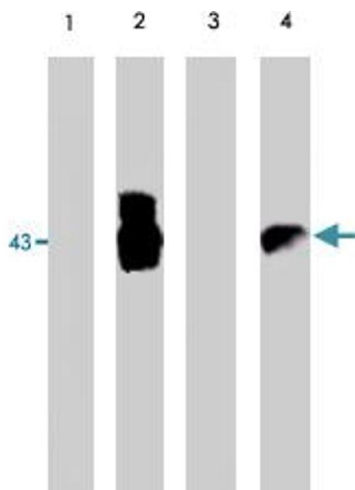
Preservative: Sodium azide

Precaution of Use: This product contains Sodium azide: a POISONOUS AND HAZARDOUS SUBSTANCE which should be handled by trained staff only.

Storage: -20 °C

Storage Comment: Store at -20°C.
Aliquot to avoid repeated freezing and thawing.

Images



Western Blotting

Image 1. Western blot analysis using EIA polyclonal antibody on HCT-116 cell lysate (lanes 1 and 3)- negative control and 293 cell lysate (lanes 2 and 4)- positive control.