



[Go to Product page](#)

Datasheet for ABIN5577156

anti-EIF2S1 antibody

2 Images

Overview

Quantity:	50 µL
Target:	EIF2S1
Reactivity:	Human
Host:	Mouse
Clonality:	Monoclonal
Conjugate:	This EIF2S1 antibody is un-conjugated
Application:	Western Blotting (WB), ELISA, Immunohistochemistry (Paraffin-embedded Sections) (IHC (p))

Product Details

Purpose:	Mouse monoclonal antibody raised against human EIF2S1.
Immunogen:	Recombinant protein corresponding to human EIF2S1.
Clone:	AT5E10
Isotype:	IgG2b
Cross-Reactivity:	Human

Target Details

Target:	EIF2S1
Alternative Name:	EIF2S1 (EIF2S1 Products)
Background:	Full Gene Name: eukaryotic translation initiation factor 2, subunit 1 alpha, 35 kDa Synonyms: EIF-2,EIF-2A,EIF-2alpha,EIF2,EIF2A

Target Details

Gene ID: 1965

Pathways: [Ribonucleoprotein Complex Subunit Organization](#), [ER-Nucleus Signaling](#), [Hepatitis C](#)

Application Details

Application Notes: ELISA
Immunohistochemistry (Formalin/PFA-fixed paraffin-embedded sections) (10 µg/mL)
Western Blot (1:1000)
The optimal working dilution should be determined by the end user.

Restrictions: For Research Use only

Handling

Format: Liquid

Buffer: In PBS, pH 7.4 (0.09 % sodium azide).

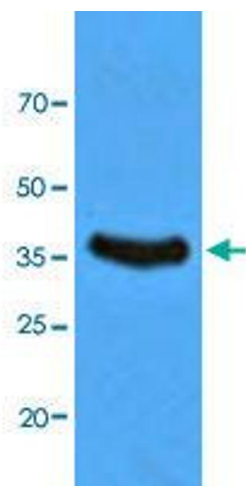
Preservative: Sodium azide

Precaution of Use: This product contains Sodium azide: a POISONOUS AND HAZARDOUS SUBSTANCE which should be handled by trained staff only.

Storage: 4 °C, -20 °C

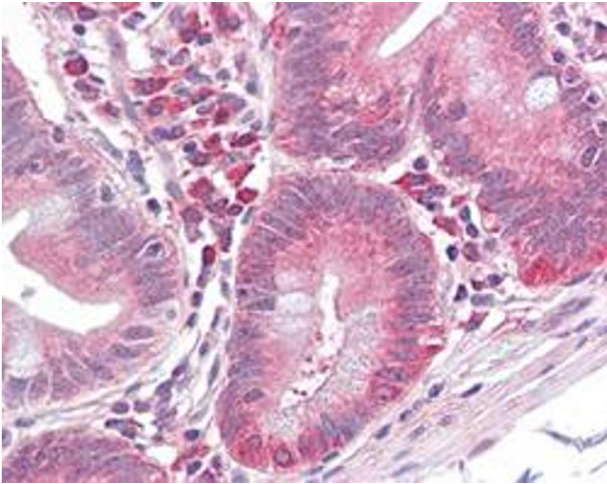
Storage Comment: Store at 4°C. For long term storage store at -20°C.
Aliquot to avoid repeated freezing and thawing.

Images



Western Blotting

Image 1. Western blot analysis of HeLa cell lysate with EIF2S1 monoclonal antibody, clone AT5E10 at 1:1000 dilution followed by HRP-conjugated goat anti-mouse secondary antibody and visualized by ECL detection system.



Immunohistochemistry

Image 2. Immunohistochemical staining (Formalin-fixed paraffin-embedded sections) of human small intestine with EIF2S1 monoclonal antibody, clone AT5E10 at 10 ug/mL working concentration.