



[Go to Product page](#)

Datasheet for ABIN5577211
anti-Elastase 3B antibody (AA 82-238)

1 Image

Overview

Quantity:	100 µg
Target:	Elastase 3B (ELA3B)
Binding Specificity:	AA 82-238
Reactivity:	Human
Host:	Mouse
Clonality:	Monoclonal
Conjugate:	This Elastase 3B antibody is un-conjugated
Application:	Western Blotting (WB), Immunofluorescence (IF), Flow Cytometry (FACS)

Product Details

Purpose:	Mouse monoclonal antibody raised against partial recombinant human ELA3B.
Immunogen:	Recombinant protein corresponding to amino acids 82-238 of human ELA3B.
Clone:	CELA3B-1811
Isotype:	IgG2b
Cross-Reactivity:	Human

Target Details

Target:	Elastase 3B (ELA3B)
Alternative Name:	ELA3B (ELA3B Products)
Background:	Full Gene Name: elastase 3B, pancreatic

Target Details

Gene ID: 23436

Application Details

Application Notes: Flow Cytometry (0.5-1 $\mu\text{g}/10^6$ cells)
Immunofluorescence (0.5-1 $\mu\text{g}/\text{mL}$)
Western Blotting (0.5-1 $\mu\text{g}/\text{mL}$)
The optimal working dilution should be determined by the end user.

Restrictions: For Research Use only

Handling

Format: Liquid

Buffer: In 10 mM PBS (0.05 % BSA, 0.05 % sodium azide).

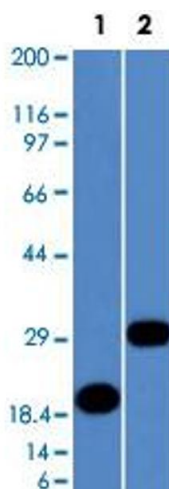
Preservative: Sodium azide

Precaution of Use: This product contains Sodium azide: a POISONOUS AND HAZARDOUS SUBSTANCE which should be handled by trained staff only.

Storage: 4 °C

Storage Comment: Store at 4°C.

Images



Western Blotting

Image 1. Western Blot analysis of Lane 1: recombinant protein and Lane 2: human pancreas tissue lysate with ELA3B monoclonal antibody, clone CELA3B/1811 .