



[Go to Product page](#)

Datasheet for ABIN5577239
anti-ELOVL5 antibody (C-Term)

2 Images

Overview

| | |
|----------------------|---|
| Quantity: | 50 µg |
| Target: | ELOVL5 |
| Binding Specificity: | C-Term |
| Reactivity: | Human, Gorilla, Orang-Utan |
| Host: | Rabbit |
| Clonality: | Polyclonal |
| Conjugate: | This ELOVL5 antibody is un-conjugated |
| Application: | Immunohistochemistry (Paraffin-embedded Sections) (IHC (p)) |

Product Details

| | |
|-----------------------------|---|
| Purpose: | Rabbit polyclonal antibody raised against synthetic peptide of ELOVL5. |
| Immunogen: | A synthetic peptide corresponding to 15 amino acid at C-terminus of human ELOVL5. |
| Specificity: | BLAST analysis of the peptide immunogen showed no homology with other human proteins. |
| Cross-Reactivity: | Gorilla, Human, Orang-Utan |
| Cross-Reactivity (Details): | BLAST analysis of the peptide immunogen showed no homology with other human proteins. |

Target Details

| | |
|-------------------|---|
| Target: | ELOVL5 |
| Alternative Name: | ELOVL5 (ELOVL5 Products) |
| Background: | Full Gene Name: ELOVL family member 5, elongation of long chain fatty acids (FEN1/Elo2, |

Target Details

SUR4/Elo3-like, yeast)

Synonyms: HEL01,dJ483K16.1

Gene ID: 60481

Application Details

Application Notes: Immunohistochemistry (Formalin/PFA-fixed paraffin-embedded sections) (15 µg/mL)
The optimal working dilution should be determined by the end user.

Restrictions: For Research Use only

Handling

Format: Liquid

Buffer: In PBS (0.09 % sodium azide)

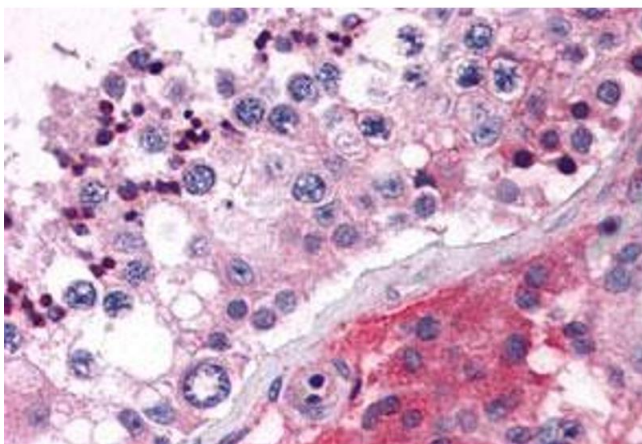
Preservative: Sodium azide

Precaution of Use: This product contains Sodium azide: a POISONOUS AND HAZARDOUS SUBSTANCE which should be handled by trained staff only.

Storage: 4 °C,-80 °C

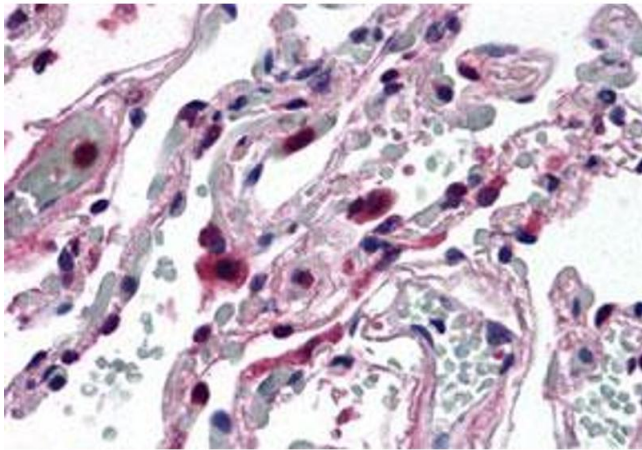
Storage Comment: Store at 4°C. For long term storage store at -80°C.
Aliquot to avoid repeated freezing and thawing.

Images



Immunohistochemistry

Image 1. Immunohistochemistry (Formalin/PFA-fixed paraffin-embedded sections) of human testis tissue with ELOVL5 polyclonal antibody . Immunohistochemistry of formalin-fixed, paraffin-embedded tissue after heat-induced antigen retrieval.



Immunohistochemistry

Image 2. Immunohistochemistry (Formalin/PFA-fixed paraffin-embedded sections) of human lung tissue with ELOVL5 polyclonal antibody . Immunohistochemistry of formalin-fixed, paraffin-embedded tissue after heat-induced antigen retrieval.