

Datasheet for ABIN5577250
anti-EMID1 antibody



[Go to Product page](#)

2 Images

Overview

Quantity:	100 µL
Target:	EMID1
Reactivity:	Human
Host:	Rabbit
Clonality:	Polyclonal
Conjugate:	This EMID1 antibody is un-conjugated
Application:	Western Blotting (WB), Immunohistochemistry (Paraffin-embedded Sections) (IHC (p))

Product Details

Purpose:	Rabbit polyclonal antibody raised against recombinant EMID1.
Immunogen:	Recombinant protein corresponding to amino acids of human EMID1.
Sequence:	RNWCSYVVTR TISCHVQNGT YLQRVLQNCP WPMSCPGSSY RTVVRPTYKV MYKIVTAREW RCCPGHSGVS CEEVAASSAS LPMWGSTM RRMALRPTAF SGCLNCSKVS ELTERLKVLE AKMTMLTVIE QPVPPTPAT
Isotype:	IgG

Target Details

Target:	EMID1
Alternative Name:	EMID1 (EMID1 Products)
Background:	Full Gene Name: EMI domain containing 1 Synonyms: EMI5,EMU1,MGC50657,hEmu1

Target Details

Gene ID: 129080

Application Details

Application Notes: Immunohistochemistry (1:50-1:200)
Western Blot (1:100-1:250)
The optimal working dilution should be determined by the end user.

Restrictions: For Research Use only

Handling

Format: Liquid

Buffer: In PBS, pH 7.2, (40 % glycerol, 0.02 % sodium azide)

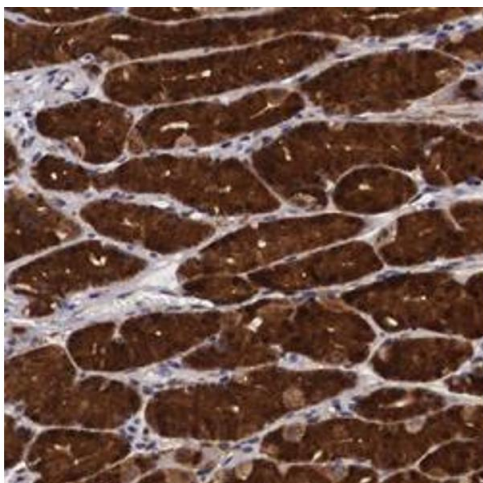
Preservative: Sodium azide

Precaution of Use: This product contains Sodium azide: a POISONOUS AND HAZARDOUS SUBSTANCE which should be handled by trained staff only.

Storage: 4 °C, -20 °C

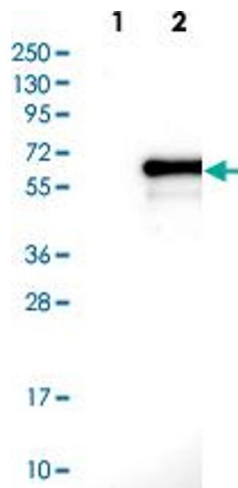
Storage Comment: Store at 4°C. For long term storage store at -20°C.
Aliquot to avoid repeated freezing and thawing.

Images



Immunohistochemistry

Image 1. Immunohistochemical staining of human breast with EMID1 polyclonal antibody shows cytoplasmic positivity in glandular cells.



Western Blotting

Image 2. Western blot analysis of Lane 1: Negative control (vector only transfected HEK293T lysate). Lane 2: Over-expression lysate (Co-expressed with a C-terminal myc-DDK tag (~3.1 kDa) in mammalian HEK293T cells with EMID1 polyclonal antibody .