

Datasheet for ABIN5577292
anti-ENHO antibody (AA 10-60)[Go to Product page](#)

2 Images

Overview

Quantity:	100 µL
Target:	ENHO
Binding Specificity:	AA 10-60
Reactivity:	Human, Mouse, Rat, Cow
Host:	Rabbit
Clonality:	Polyclonal
Conjugate:	This ENHO antibody is un-conjugated
Application:	Western Blotting (WB)

Product Details

Purpose:	Rabbit polyclonal antibody raised against synthetic peptide of ENHO.
Immunogen:	A synthetic peptide corresponding to amino acids 10-60 of human ENHO.
Specificity:	100 % sequence identity with human and mouse protein, 88 % sequence identity with bovine protein. This antibody is useful for Western blot analysis where a band can be seen at ~7.9 KDa.
Cross-Reactivity:	Cow, Human, Mouse, Rat

Target Details

Target:	ENHO
Alternative Name:	ENHO (ENHO Products)

Target Details

Background: Full Gene Name: energy homeostasis associated
Synonyms: C9orf165,UNQ470

Gene ID: 375704

Application Details

Application Notes: Western Blot (2 µg/mL)
The optimal working dilution should be determined by the end user.

Restrictions: For Research Use only

Handling

Format: Liquid

Buffer: In PBS (30 % glycerol, 0.09 % sodium azide)

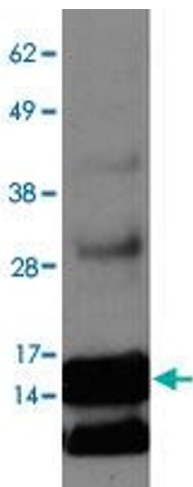
Preservative: Sodium azide

Precaution of Use: This product contains Sodium azide: a POISONOUS AND HAZARDOUS SUBSTANCE which should be handled by trained staff only.

Storage: 4 °C,-20 °C

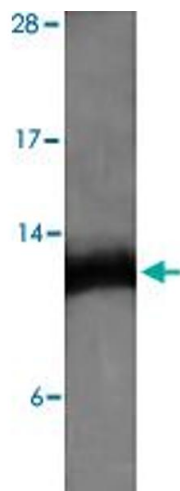
Storage Comment: Store at 4°C for short term. For long term storage store at -20°C.
Aliquot to avoid repeated freezing and thawing.

Images



Western Blotting

Image 1. Western blot on ENHO overexpression lysate with ENHO polyclonal antibody .



Western Blotting

Image 2. Western blot on mouse brain lysate with ENHO polyclonal antibody .