

Datasheet for ABIN5577319

anti-ENTPD2 antibody (Internal Region)[Go to Product page](#)**1** Image

Overview

Quantity:	50 µg
Target:	ENTPD2
Binding Specificity:	Internal Region
Reactivity:	Human, Gorilla
Host:	Rabbit
Clonality:	Polyclonal
Conjugate:	This ENTPD2 antibody is un-conjugated
Application:	Immunohistochemistry (Paraffin-embedded Sections) (IHC (p))

Product Details

Purpose:	Rabbit polyclonal antibody raised against synthetic peptide of ENTPD2.
Immunogen:	A synthetic peptide corresponding to 18 amino acids at internal region of human ENTPD2.
Specificity:	BLAST analysis of the peptide immunogen showed no homology with other human proteins.
Cross-Reactivity:	Gorilla, Human
Cross-Reactivity (Details):	BLAST analysis of the peptide immunogen showed no homology with other human proteins.

Target Details

Target:	ENTPD2
Alternative Name:	ENTPD2 (ENTPD2 Products)
Background:	Full Gene Name: ectonucleoside triphosphate diphosphohydrolase 2

Target Details

Synonyms: CD39L1,NTPDase-2

Gene ID: 954

Application Details

Application Notes: Immunohistochemistry (Formalin/PFA-fixed paraffin-embedded sections) (2.5 µg/mL)
The optimal working dilution should be determined by the end user.

Restrictions: For Research Use only

Handling

Format: Liquid

Buffer: In PBS (0.09 % sodium azide)

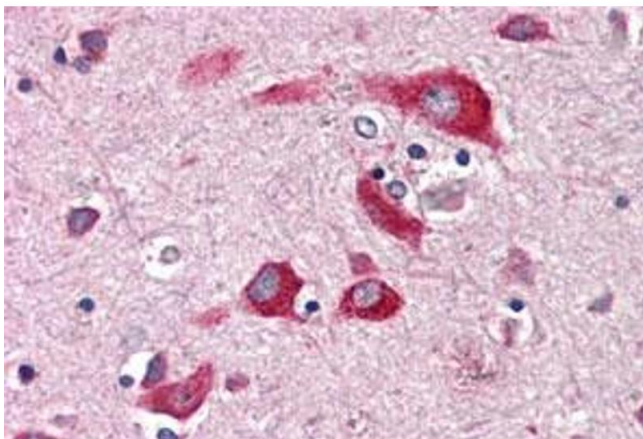
Preservative: Sodium azide

Precaution of Use: This product contains Sodium azide: a POISONOUS AND HAZARDOUS SUBSTANCE which should be handled by trained staff only.

Storage: 4 °C,-80 °C

Storage Comment: Store at 4°C. For long term storage store at -80°C.
Aliquot to avoid repeated freezing and thawing.

Images



Immunohistochemistry

Image 1. Immunohistochemical staining of human brain, cortex with ENTPD2 polyclonal antibody . Immunohistochemistry of formalin-fixed, paraffin-embedded tissue after heat-induced antigen retrieval.