

Datasheet for ABIN5577413  
**anti-EPHX2 antibody (C-Term)**[Go to Product page](#)

## 1 Image

## Overview

Quantity:	50 µg
Target:	EPHX2
Binding Specificity:	C-Term
Reactivity:	Human, Gorilla, Monkey, Orang-Utan
Host:	Rabbit
Clonality:	Polyclonal
Conjugate:	This EPHX2 antibody is un-conjugated
Application:	ELISA, Immunohistochemistry (Paraffin-embedded Sections) (IHC (p))

## Product Details

Purpose:	Rabbit polyclonal antibody raised against synthetic peptide of EPHX2.
Immunogen:	A synthetic peptide corresponding to 17 amino acids at C-terminus of human EPHX2.
Specificity:	BLAST analysis of the peptide immunogen showed no homology with other human proteins.
Cross-Reactivity:	Gorilla, Human, Monkey, Orang-Utan
Cross-Reactivity (Details):	BLAST analysis of the peptide immunogen showed no homology with other human proteins.

## Target Details

Target:	EPHX2
Alternative Name:	EPHX2 ( <a href="#">EPHX2 Products</a> )
Background:	Full Gene Name: epoxide hydrolase 2, cytoplasmic

## Target Details

Synonyms: CEH,SEH

Gene ID: 2053

## Application Details

Application Notes: Immunohistochemistry (Formalin/PFA-fixed paraffin-embedded sections) (5-10 µg/mL)  
The optimal working dilution should be determined by the end user.

Restrictions: For Research Use only

## Handling

Format: Liquid

Buffer: In PBS (0.09 % sodium azide)

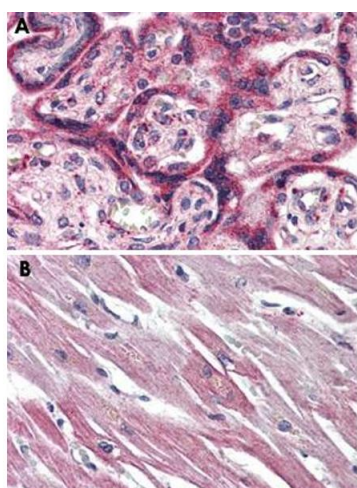
Preservative: Sodium azide

Precaution of Use: This product contains Sodium azide: a POISONOUS AND HAZARDOUS SUBSTANCE which should be handled by trained staff only.

Storage: 4 °C, -80 °C

Storage Comment: Store at 4°C. For long term storage store at -80°C.  
Aliquot to avoid repeated freezing and thawing.

## Images



### Immunohistochemistry

**Image 1.** Immunohistochemical staining of formalin-fixed, paraffin-embedded human placenta (A) and human heart (B) tissue after heat-induced antigen retrieval. Using EPHX2 polyclonal antibody .