

Datasheet for ABIN5577432  
**anti-EPS8-Like 1 antibody (N-Term)**

## 2 Images

[Go to Product page](#)

## Overview

Quantity:	100 µL
Target:	EPS8-Like 1 (EPS8L1)
Binding Specificity:	N-Term
Reactivity:	Human
Host:	Rabbit
Clonality:	Polyclonal
Conjugate:	This EPS8-Like 1 antibody is un-conjugated
Application:	Western Blotting (WB), Immunohistochemistry (Paraffin-embedded Sections) (IHC (p))

## Product Details

Purpose:	Rabbit polyclonal antibody raised against synthetic peptide of human EPS8L1.
Immunogen:	A synthetic peptide corresponding to N-terminus of human EPS8L1.
Sequence:	QRDRSPAET PPLQRRPSVR AVISTVERGA GRGRPQAKPI PEAEAAQRPE
Cross-Reactivity:	Human

## Target Details

Target:	EPS8-Like 1 (EPS8L1)
Alternative Name:	EPS8L1 ( <a href="#">EPS8L1 Products</a> )
Background:	Full Gene Name: EPS8-like 1 Synonyms: DRC3, EPS8R1, FLJ20258, MGC23164, MGC4642, PP10566

## Target Details

Gene ID:	54869
NCBI Accession:	<a href="#">NM_017729</a>

## Application Details

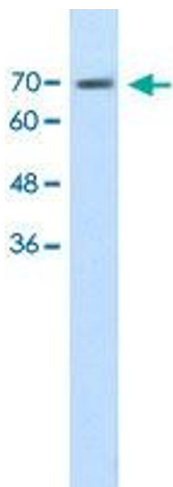
Application Notes:	Immunohistochemistry (Formalin/PFA-fixed paraffin-embedded sections) (4-8 µg/mL) Western Blot (1.25 µg/mL) The optimal working dilution should be determined by the end user.
--------------------	---

Restrictions:	For Research Use only
---------------	-----------------------

## Handling

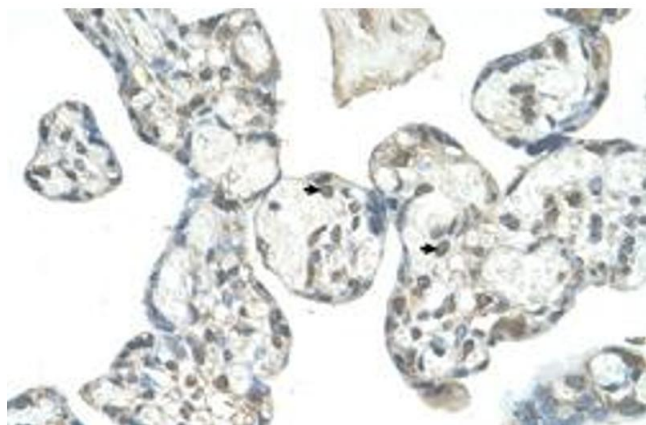
Format:	Liquid
Buffer:	In PBS (2 % sucrose, 0.09 % sodium azide).
Preservative:	Sodium azide
Precaution of Use:	This product contains Sodium azide: a POISONOUS AND HAZARDOUS SUBSTANCE which should be handled by trained staff only.
Storage:	4 °C,-20 °C
Storage Comment:	Store at 4°C. For long term storage store at -20°C. Aliquot to avoid repeated freezing and thawing.

## Images



### Western Blotting

**Image 1.** Western Blot analysis of HepG2 cell lysate with EPS8L1 polyclonal antibody at 1.25 ug/mL working concentration.



#### Immunohistochemistry

**Image 2.** Immunohistochemical staining (Formalin-fixed paraffin-embedded sections) of human placenta with EPS8L1 polyclonal antibody at 4-8 ug/mL working concentration.