

Datasheet for ABIN5577439  
**anti-ERAP1 antibody (Internal Region)**[Go to Product page](#)

## 1 Image

## Overview

Quantity:	50 µg
Target:	ERAP1
Binding Specificity:	Internal Region
Reactivity:	Human, Gorilla, Hamster, Chimpanzee, Orang-Utan
Host:	Rabbit
Clonality:	Polyclonal
Conjugate:	This ERAP1 antibody is un-conjugated
Application:	Immunohistochemistry (Paraffin-embedded Sections) (IHC (p))

## Product Details

Purpose:	Rabbit polyclonal antibody raised against synthetic peptide of ERAP1.
Immunogen:	A synthetic peptide corresponding to 17 amino acids at internal region of human ERAP1.
Specificity:	BLAST analysis of the peptide immunogen showed no homology with other human proteins.
Cross-Reactivity:	Chimpanzee, Gorilla, Hamster, Human, Orang-Utan
Cross-Reactivity (Details):	BLAST analysis of the peptide immunogen showed no homology with other human proteins.

## Target Details

Target:	ERAP1
Alternative Name:	ERAP1 ( <a href="#">ERAP1 Products</a> )
Background:	Full Gene Name: endoplasmic reticulum aminopeptidase 1

## Target Details

Synonyms: A-LAP,ALAP,APPILS,ARTS-1,ARTS1,ERAAP,ERAAP1,KIAA0525,PILS-AP,PILSAP

Gene ID: 51752

## Application Details

Application Notes: Immunohistochemistry (Formalin/PFA-fixed paraffin-embedded sections) (10-15 µg/mL)  
The optimal working dilution should be determined by the end user.

Restrictions: For Research Use only

## Handling

Format: Liquid

Buffer: In PBS (0.09 % sodium azide)

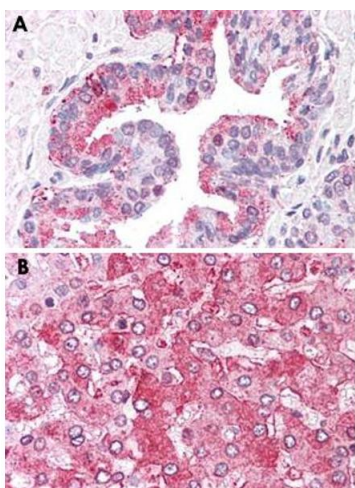
Preservative: Sodium azide

Precaution of Use: This product contains Sodium azide: a POISONOUS AND HAZARDOUS SUBSTANCE which should be handled by trained staff only.

Storage: 4 °C,-80 °C

Storage Comment: Store at 4°C. For long term storage store at -80°C.  
Aliquot to avoid repeated freezing and thawing.

## Images



### Immunohistochemistry

**Image 1.** Immunohistochemical staining of formalin-fixed, paraffin-embedded human prostate (A) and human liver (B) tissue after heat-induced antigen retrieval. Using ERAP1 polyclonal antibody .