

Datasheet for ABIN5577493
anti-ERCC8 antibody (C-Term)

5 Images

[Go to Product page](#)

Overview

Quantity:	100 µL
Target:	ERCC8
Binding Specificity:	C-Term
Reactivity:	Human
Host:	Rabbit
Clonality:	Polyclonal
Conjugate:	This ERCC8 antibody is un-conjugated
Application:	Western Blotting (WB), Immunohistochemistry (Paraffin-embedded Sections) (IHC (p))

Product Details

Purpose:	Rabbit polyclonal antibody raised against synthetic peptide of human ERCC8.
Immunogen:	A synthetic peptide corresponding to C-terminus of human ERCC8.
Sequence:	QELYSGSRDC NILAWVPSLY EPVPDDDETT TKSQLNPAFE DAWSSSDEEG
Cross-Reactivity:	Human

Target Details

Target:	ERCC8
Alternative Name:	ERCC8 (ERCC8 Products)
Background:	Full Gene Name: excision repair cross-complementing rodent repair deficiency, complementation group 8

Target Details

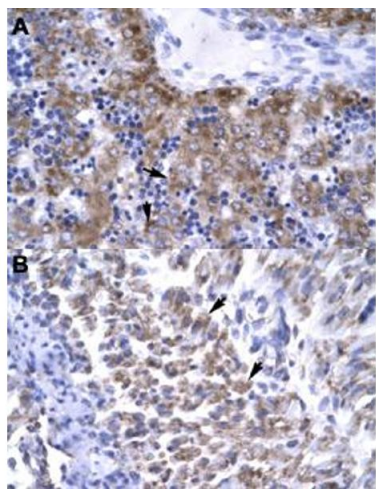
	Synonyms: CKN1,CSA
Gene ID:	1161
NCBI Accession:	NM_000082
Pathways:	DNA Damage Repair , Positive Regulation of Response to DNA Damage Stimulus

Application Details

Application Notes:	Immunohistochemistry (Formalin/PFA-fixed paraffin-embedded sections) (4-8 µg/mL) Western Blot The optimal working dilution should be determined by the end user.
Restrictions:	For Research Use only

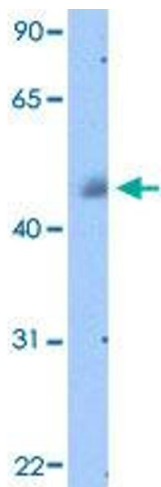
Handling

Format:	Liquid
Buffer:	In PBS (2 % sucrose, 0.09 % sodium azide).
Preservative:	Sodium azide
Precaution of Use:	This product contains Sodium azide: a POISONOUS AND HAZARDOUS SUBSTANCE which should be handled by trained staff only.
Storage:	4 °C,-20 °C
Storage Comment:	Store at 4°C. For long term storage store at -20°C. Aliquot to avoid repeated freezing and thawing.



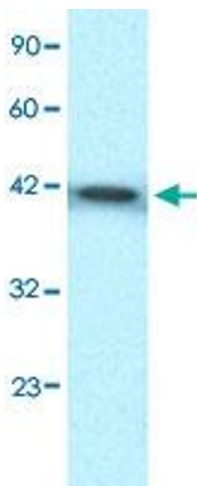
Immunohistochemistry

Image 1. Immunohistochemical staining (Formalin-fixed paraffin-embedded sections) of human liver (A) and human muscle (B) with ERCC8 polyclonal antibody at 4-8 ug/mL working concentration.



Western Blotting

Image 2. Western Blot analysis of human placenta tissue lysate with ERCC8 polyclonal antibody at 1 ug/mL working concentration.



Western Blotting

Image 3. Western Blot analysis of Jurkat cell lysate with ERCC8 polyclonal antibody at 0.1-5 ug/mL working concentration.

Please check the [product details page](#) for more images. Overall 5 images are available for ABIN5577493.