

Datasheet for ABIN5577501

**anti-ERI3 antibody**[Go to Product page](#)**1** Image

## Overview

Quantity:	100 µL
Target:	ERI3
Reactivity:	Human
Host:	Rabbit
Clonality:	Polyclonal
Conjugate:	This ERI3 antibody is un-conjugated
Application:	Immunohistochemistry (Paraffin-embedded Sections) (IHC (p))

## Product Details

Purpose:	Rabbit polyclonal antibody raised against recombinant ERI3.
Immunogen:	Recombinant protein corresponding to amino acids of human ERI3.
Sequence:	FCSISTRKLA AHGFGASMAA MVSFPPQRYH YFLVLDPEAT CDKPQIHPQE IIEFPILKLN GRTMEIESTF HMYV
Isotype:	IgG
Cross-Reactivity:	Human

## Target Details

Target:	ERI3
Alternative Name:	ERI3 ( <a href="#">ERI3 Products</a> )
Background:	Full Gene Name: exoribonuclease 3

## Target Details

Synonyms: FLJ22943,MGC2683,PINT1,PRNPIP

Gene ID: 79033

## Application Details

Application Notes: Immunohistochemistry (1:20-1:50)  
The optimal working dilution should be determined by the end user.

Restrictions: For Research Use only

## Handling

Format: Liquid

Buffer: In PBS, pH 7.2 (40 % glycerol, 0.02 % sodium azide)

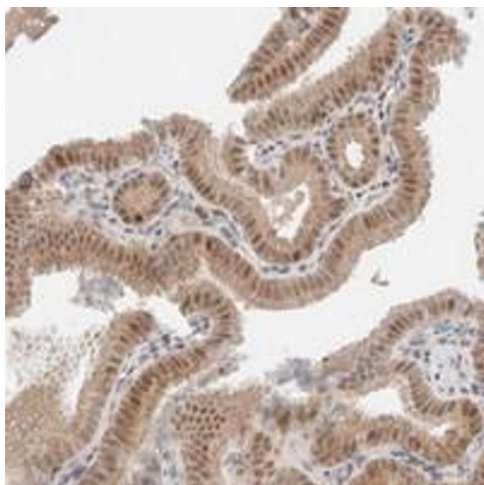
Preservative: Sodium azide

Precaution of Use: This product contains Sodium azide: a POISONOUS AND HAZARDOUS SUBSTANCE which should be handled by trained staff only.

Storage: 4 °C,-20 °C

Storage Comment: Store at 4°C. For long term storage store at -20°C.  
Aliquot to avoid repeated freezing and thawing.

## Images



### Immunohistochemistry

**Image 1.** Immunohistochemical staining of human gallbladder with ERI3 polyclonal antibody shows moderate cytoplasmic and nuclear positivity in glandular cells at 1:20-1:50 dilution.