



Datasheet for ABIN5577519
anti-Separase antibody (pSer1126)



[Go to Product page](#)

1 Image

Overview

Quantity:	100 µL
Target:	Separase (ESPL1)
Binding Specificity:	pSer1126
Reactivity:	Human
Host:	Rabbit
Clonality:	Polyclonal
Conjugate:	This Separase antibody is un-conjugated
Application:	Western Blotting (WB), Immunofluorescence (IF)

Product Details

Purpose:	Rabbit polyclonal antibody raised against synthetic phosphopeptide of human ESPL1.
Immunogen:	A synthetic phosphopeptide (conjugated with KLH) corresponding to residues surrounding S1126 of human ESPL1.
Specificity:	ESPL1 (phospho S1126) polyclonal antibody detects endogenous levels of human ESPL1 only when phosphorylated at serine 1126.
Cross-Reactivity:	Human

Target Details

Target:	Separase (ESPL1)
Alternative Name:	ESPL1 (ESPL1 Products)

Target Details

Background:	Full Gene Name: extra spindle pole bodies homolog 1 (<i>S. cerevisiae</i>) Synonyms: ESP1,FLJ46492,KIAA0165,SEPARASE,SEPARIN
Gene ID:	9700

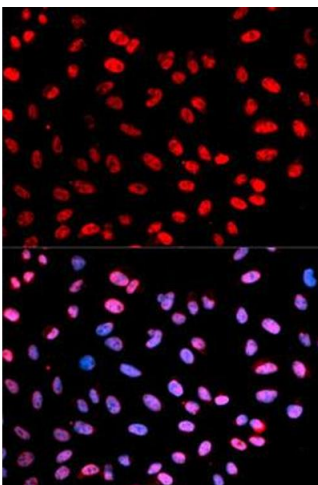
Application Details

Application Notes:	Immunofluorescence (1:20-1:100) Western Blot (1:500-1:2000) The optimal working dilution should be determined by the end user.
Restrictions:	For Research Use only

Handling

Format:	Liquid
Buffer:	In PBS (without Mg^{2+} and Ca^{2+}), 150 mM NaCl, pH 7.4 (50 % glycerol, 0.02 % sodium azide)
Preservative:	Sodium azide
Precaution of Use:	This product contains Sodium azide: a POISONOUS AND HAZARDOUS SUBSTANCE which should be handled by trained staff only.
Storage:	-20 °C
Storage Comment:	Store at -20°C. Aliquot to avoid repeated freezing and thawing.

Images



Immunofluorescence

Image 1. Immunofluorescent staining of U-2 OS cells with ESPL1 (phospho S1126) polyclonal antibody at 1:20-1:100 dilution. Blue: DAPI for nuclear staining.