



[Go to Product page](#)

Datasheet for ABIN5577560

anti-ESRRA antibody

1 Image

Overview

Quantity:	50 µg
Target:	ESRRA
Reactivity:	Human, Mouse, Rat, Dog, Cow, Horse, Pig, Monkey, Hamster, Gorilla
Host:	Rabbit
Clonality:	Polyclonal
Conjugate:	This ESRRA antibody is un-conjugated
Application:	Immunohistochemistry (Paraffin-embedded Sections) (IHC (p))

Product Details

Purpose:	Rabbit polyclonal antibody raised against synthetic peptide of ESRRA.
Immunogen:	A synthetic peptide corresponding to 15 amino acid at ligand-binding domain of human ESRRA.
Specificity:	BLAST analysis of the peptide immunogen showed no homology with other human proteins, except ESRRG (60 %).
Cross-Reactivity:	Cow, Dog, Gorilla, Hamster, Horse, Human, Monkey, Mouse, Pig, Rat
Cross-Reactivity (Details):	BLAST analysis of the peptide immunogen showed no homology with other human proteins, except ESRRG (60 %).

Target Details

Target:	ESRRA
Alternative Name:	ESRRA (ESRRA Products)

Target Details

Background: Full Gene Name: estrogen-related receptor alpha
Synonyms: ERR1,ERRa,ERRalpha,ESRL1,NR3B1

Gene ID: 2101

Pathways: [Nuclear Receptor Transcription Pathway](#), [Steroid Hormone Mediated Signaling Pathway](#),
[Regulation of Lipid Metabolism by PPARalpha](#)

Application Details

Application Notes: Immunohistochemistry (Formalin/PFA-fixed paraffin-embedded sections) (11-21 µg/mL)
The optimal working dilution should be determined by the end user.

Restrictions: For Research Use only

Handling

Format: Liquid

Buffer: In PBS (0.09 % sodium azide)

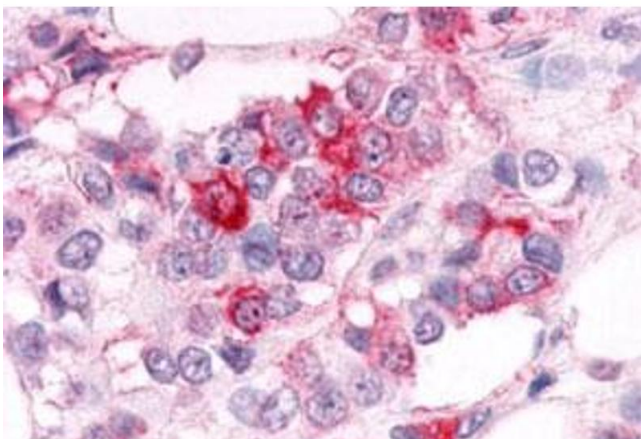
Preservative: Sodium azide

Precaution of Use: This product contains Sodium azide: a POISONOUS AND HAZARDOUS SUBSTANCE which should be handled by trained staff only.

Storage: 4 °C,-80 °C

Storage Comment: Store at 4°C. For long term storage store at -80°C.
Aliquot to avoid repeated freezing and thawing.

Images



Immunohistochemistry

Image 1. Immunohistochemistry (Formalin/PFA-fixed paraffin-embedded sections) of human breast cancer tissue with ESRRRA polyclonal antibody . Immunohistochemistry of formalin-fixed, paraffin-embedded tissue after heat-induced antigen retrieval.