

Datasheet for ABIN5577562

**anti-ESRRB antibody**[Go to Product page](#)**1** Image

## Overview

Quantity:	50 µg
Target:	ESRRB
Reactivity:	Human, Horse, Dog, Cow, Rabbit, Monkey, Pig, Hamster, Gorilla
Host:	Rabbit
Clonality:	Polyclonal
Conjugate:	This ESRRB antibody is un-conjugated
Application:	Immunohistochemistry (Paraffin-embedded Sections) (IHC (p))

## Product Details

Purpose:	Rabbit polyclonal antibody raised against synthetic peptide of ESRRB.
Immunogen:	A synthetic peptide corresponding to 15 amino acid at ligand-binding domain of human ESRRB.
Specificity:	BLAST analysis of the peptide immunogen showed no homology with other human proteins, except ESRRG (67 %).
Cross-Reactivity:	Cow, Dog, Gorilla, Hamster, Horse, Human, Monkey, Pig, Rabbit
Cross-Reactivity (Details):	BLAST analysis of the peptide immunogen showed no homology with other human proteins, except ESRRG (67 %).

## Target Details

Target:	ESRRB
Alternative Name:	ESRRB ( <a href="#">ESRRB Products</a> )



## Target Details

Background:	Full Gene Name: estrogen-related receptor beta Synonyms: DFNB35,ERR2,ERRb,ERRbeta,ERRbeta-2,ESRL2,NR3B2
Gene ID:	2103
Pathways:	<a href="#">Nuclear Receptor Transcription Pathway</a> , <a href="#">Steroid Hormone Mediated Signaling Pathway</a> , <a href="#">Stem Cell Maintenance</a>

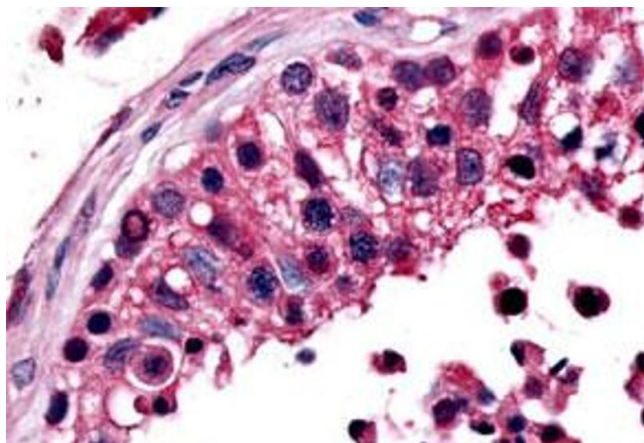
## Application Details

Application Notes:	Immunohistochemistry (Formalin/PFA-fixed paraffin-embedded sections) (3 µg/mL) The optimal working dilution should be determined by the end user.
Restrictions:	For Research Use only

## Handling

Format:	Liquid
Buffer:	In PBS (0.09 % sodium azide)
Preservative:	Sodium azide
Precaution of Use:	This product contains Sodium azide: a POISONOUS AND HAZARDOUS SUBSTANCE which should be handled by trained staff only.
Storage:	4 °C,-80 °C
Storage Comment:	Store at 4°C. For long term storage store at -80°C. Aliquot to avoid repeated freezing and thawing.

## Images



### Immunohistochemistry

**Image 1.** Immunohistochemistry (Formalin/PFA-fixed paraffin-embedded sections) of human testis tissue with ESRRB polyclonal antibody . Immunohistochemistry of formalin-fixed, paraffin-embedded tissue after heat-induced antigen retrieval.