

Datasheet for ABIN5577596
anti-EVX1 antibody (N-Term)

3 Images

[Go to Product page](#)

Overview

Quantity:	100 µL
Target:	EVX1
Binding Specificity:	N-Term
Reactivity:	Human
Host:	Rabbit
Clonality:	Polyclonal
Conjugate:	This EVX1 antibody is un-conjugated
Application:	Western Blotting (WB), Immunohistochemistry (Paraffin-embedded Sections) (IHC (p))

Product Details

Purpose:	Rabbit polyclonal antibody raised against synthetic peptide of human EVX1.
Immunogen:	A synthetic peptide corresponding to N-terminus of human EVX1.
Sequence:	AGSAAGPGAE PQVAGAAMLG PGPPAPSVDS LSGQGQPSSS DTESDFYEEI
Cross-Reactivity:	Human

Target Details

Target:	EVX1
Alternative Name:	EVX1 (EVX1 Products)
Background:	Full Gene Name: even-skipped homeobox 1
Gene ID:	2128

Target Details

NCBI Accession: [NM_001989](#)

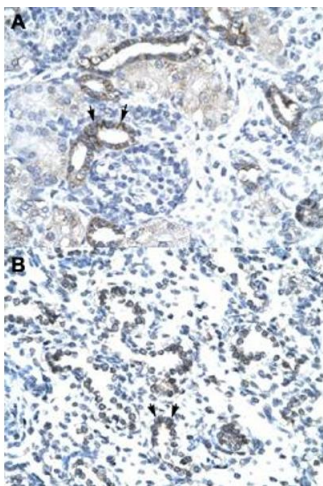
Application Details

Application Notes:	Immunohistochemistry (Formalin/PFA-fixed paraffin-embedded sections) (4-8 µg/mL) Western Blot The optimal working dilution should be determined by the end user.
Restrictions:	For Research Use only

Handling

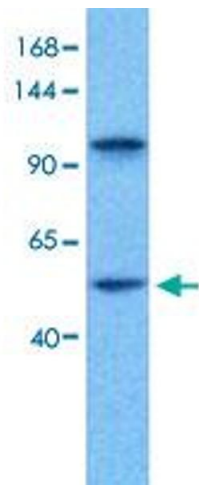
Format:	Liquid
Buffer:	In PBS (2 % sucrose, 0.09 % sodium azide).
Preservative:	Sodium azide
Precaution of Use:	This product contains Sodium azide: a POISONOUS AND HAZARDOUS SUBSTANCE which should be handled by trained staff only.
Storage:	4 °C,-20 °C
Storage Comment:	Store at 4°C. For long term storage store at -20°C. Aliquot to avoid repeated freezing and thawing.

Images



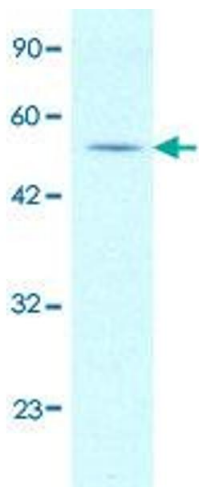
Immunohistochemistry

Image 1. Immunohistochemical staining (Formalin-fixed paraffin-embedded sections) of human kidney (A) and human lung (B) with EVX1 polyclonal antibody at 4-8 ug/mL working concentration.



Western Blotting

Image 2. Western Blot analysis of human fetal lung tissue lysate with EVX1 polyclonal antibody at 1 ug/mL working concentration.



Western Blotting

Image 3. Western Blot analysis of Jurkat cell lysate with EVX1 polyclonal antibody at 1-2 ug/mL working concentration.