

Datasheet for ABIN5577669
anti-F2RL2 antibody (AA 31-355)[Go to Product page](#)

1 Image

Overview

Quantity:	100 µg
Target:	F2RL2
Binding Specificity:	AA 31-355
Reactivity:	Mouse
Host:	Rabbit
Clonality:	Polyclonal
Conjugate:	This F2RL2 antibody is un-conjugated
Application:	Western Blotting (WB), Immunoprecipitation (IP)

Product Details

Purpose:	Rabbit polyclonal antibody raised against synthetic peptide of F2rl2.
Immunogen:	A synthetic peptide corresponding to amino acids 31-355 of mouse F2rl2.
Sequence:	KPTLTIKSFN GGPQNTFEEF PLSDIE
Cross-Reactivity:	Human, Mouse, Rat

Target Details

Target:	F2RL2
Alternative Name:	F2rl2 (F2RL2 Products)
Background:	Full Gene Name: coagulation factor II (thrombin) receptor-like 2 Synonyms: F730031A08,PAR3

Target Details

Gene ID:	14064
Pathways:	Cell-Cell Junction Organization, Regulation of G-Protein Coupled Receptor Protein Signaling

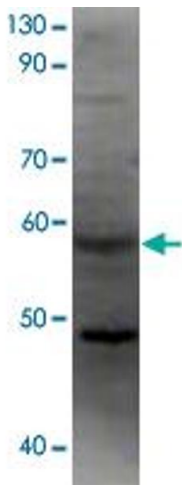
Application Details

Application Notes:	WB (1:250) Immunoprecipitation (1:200) The optimal working dilution should be determined by the end user.
Restrictions:	For Research Use only

Handling

Format:	Liquid
Concentration:	Lot specific
Buffer:	In Tris-glycine buffer, pH 7.4 (stabilizing proteins, cryogenic stabilizers, glycerol, 0.02 % sodium azide)
Preservative:	Sodium azide
Precaution of Use:	This product contains Sodium azide: a POISONOUS AND HAZARDOUS SUBSTANCE which should be handled by trained staff only.
Storage:	-20 °C
Storage Comment:	Store at -20°C Aliquot to avoid repeated freezing and thawing.

Images



Western Blotting

Image 1. Western blot analysis of recombinant F2rl2 protein using F2rl2 polyclonal antibody .