



[Go to Product page](#)

Datasheet for ABIN5577672
anti-F2RL3 antibody (N-Term)

1 Image

Overview

Quantity:	50 µg
Target:	F2RL3
Binding Specificity:	N-Term
Reactivity:	Human, Gorilla
Host:	Rabbit
Clonality:	Polyclonal
Conjugate:	This F2RL3 antibody is un-conjugated
Application:	Immunohistochemistry (Paraffin-embedded Sections) (IHC (p))

Product Details

Purpose:	Rabbit polyclonal antibody raised against synthetic peptide of F2RL3.
Immunogen:	A synthetic peptide corresponding to 16 amino acid at N-terminus of human F2RL3.
Specificity:	BLAST analysis of the peptide immunogen showed no homology with other human proteins.
Cross-Reactivity:	Gorilla, Human
Cross-Reactivity (Details):	BLAST analysis of the peptide immunogen showed no homology with other human proteins.

Target Details

Target:	F2RL3
Alternative Name:	F2RL3 (F2RL3 Products)
Background:	Full Gene Name: coagulation factor II (thrombin) receptor-like 3

Target Details

Synonyms: PAR4

Gene ID: 9002

Pathways: [Carbohydrate Homeostasis](#), [Regulation of Carbohydrate Metabolic Process](#)

Application Details

Application Notes: Immunohistochemistry (Formalin/PFA-fixed paraffin-embedded sections) (6-13 µg/mL)
The optimal working dilution should be determined by the end user.

Restrictions: For Research Use only

Handling

Format: Liquid

Buffer: In PBS (0.09 % sodium azide)

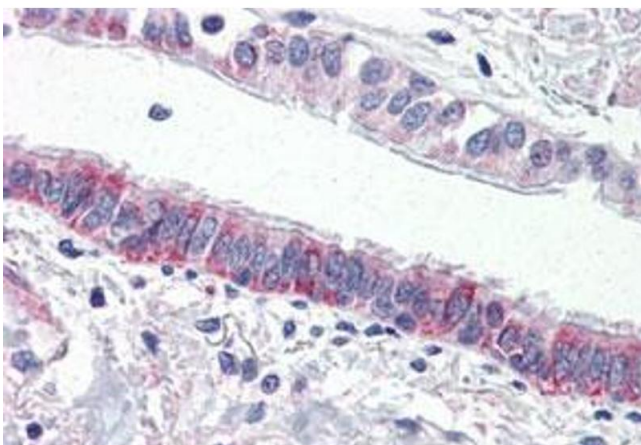
Preservative: Sodium azide

Precaution of Use: This product contains Sodium azide: a POISONOUS AND HAZARDOUS SUBSTANCE which should be handled by trained staff only.

Storage: 4 °C, -80 °C

Storage Comment: Store at 4°C. For long term storage store at -80°C.
Aliquot to avoid repeated freezing and thawing.

Images



Immunohistochemistry

Image 1. Immunohistochemistry (Formalin/PFA-fixed paraffin-embedded sections) of human lung, respiratory epithelium with F2RL3 polyclonal antibody . Immunohistochemistry of formalin-fixed, paraffin-embedded tissue after heat-induced antigen retrieval.