

Datasheet for ABIN5577768  
**anti-FAM160A1 antibody**[Go to Product page](#)

## 1 Image

## Overview

Quantity:	100 µL
Target:	FAM160A1
Reactivity:	Human
Host:	Rabbit
Clonality:	Polyclonal
Conjugate:	This FAM160A1 antibody is un-conjugated
Application:	Immunohistochemistry (Paraffin-embedded Sections) (IHC (p))

## Product Details

Purpose:	Rabbit polyclonal antibody raised against recombinant FAM160A1.
Immunogen:	Recombinant protein corresponding to amino acids of human FAM160A1.
Sequence:	LLHHKPILKP LMMLLSSCSG TTTPTVEEKL VLLNQLCSI LAKDPSILEL FFHTSEDQGA ANFLIFS
Isotype:	IgG
Cross-Reactivity:	Human

## Target Details

Target:	FAM160A1
Alternative Name:	FAM160A1 ( <a href="#">FAM160A1 Products</a> )
Background:	Full Gene Name: family with sequence similarity 160, member A1 Synonyms: FLJ43373

## Target Details

Gene ID: 729830

## Application Details

Application Notes: Immunohistochemistry (1:50-1:200)  
The optimal working dilution should be determined by the end user.

Restrictions: For Research Use only

## Handling

Format: Liquid

Buffer: In PBS, pH 7.2 (40 % glycerol, 0.02 % sodium azide)

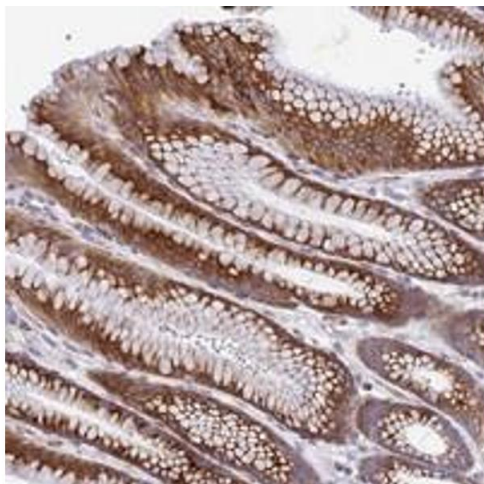
Preservative: Sodium azide

Precaution of Use: This product contains Sodium azide: a POISONOUS AND HAZARDOUS SUBSTANCE which should be handled by trained staff only.

Storage: 4 °C, -20 °C

Storage Comment: Store at 4°C. For long term storage store at -20°C.  
Aliquot to avoid repeated freezing and thawing.

## Images



### Immunohistochemistry

**Image 1.** Immunohistochemical staining of human stomach with FAM160A1 polyclonal antibody shows distinct cytoplasmic positivity in glandular cells.