



Datasheet for ABIN5577771
anti-FAM161B antibody



[Go to Product page](#)

2 Images

Overview

Quantity:	100 µL
Target:	FAM161B
Reactivity:	Human
Host:	Rabbit
Clonality:	Polyclonal
Conjugate:	This FAM161B antibody is un-conjugated
Application:	Western Blotting (WB), Immunohistochemistry (Paraffin-embedded Sections) (IHC (p))

Product Details

Purpose:	Rabbit polyclonal antibody raised against recombinant FAM161B.
Immunogen:	Recombinant protein corresponding to amino acids of human FAM161B.
Sequence:	GSRQIFPPES FADTEAGEEL SGDGLVLPRA SKLDEFLSPE EEIDSTSDST GSIYQNLQEL KQKGRWCLLE SLFQSDPESD ENLSEDEEDL ESFFQDKDRG MVQVQCPQAL RCGSTRRCSS LNNLPSNIPR PQTQPPS
Isotype:	IgG
Cross-Reactivity:	Human

Target Details

Target:	FAM161B
Alternative Name:	FAM161B (FAM161B Products)

Target Details

Background: Full Gene Name: family with sequence similarity 161, member B
Synonyms: C14orf44,FLJ31697,c14_5547

Gene ID: 145483

Application Details

Application Notes: Immunohistochemistry (1:500-1:1000)
Western Blot (1:250-1:500)
The optimal working dilution should be determined by the end user.

Restrictions: For Research Use only

Handling

Format: Liquid

Buffer: In PBS, pH 7.2 (40 % glycerol, 0.02 % sodium azide)

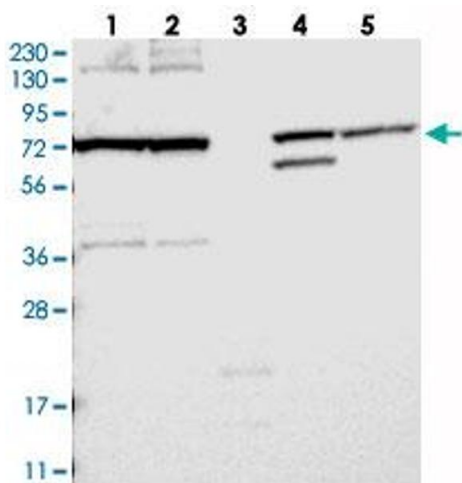
Preservative: Sodium azide

Precaution of Use: This product contains Sodium azide: a POISONOUS AND HAZARDOUS SUBSTANCE which should be handled by trained staff only.

Storage: 4 °C, -20 °C

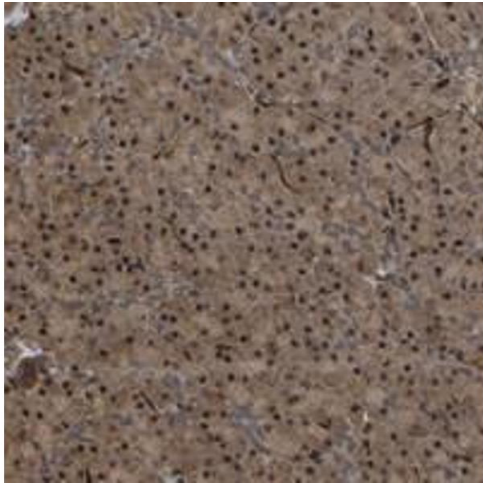
Storage Comment: Store at 4°C. For long term storage store at -20°C.
Aliquot to avoid repeated freezing and thawing.

Images



Western Blotting

Image 1. Western blot analysis of Lane 1: RT-4, Lane 2: U-251 MG, Lane 3: Human Plasma, Lane 4: Liver, Lane 5: Tonsil with FAM161B polyclonal antibody at 1:250-1:500 dilution.



Immunohistochemistry

Image 2. Immunohistochemical staining of human pancreas with FAM161B polyclonal antibody shows cytoplasmic and nuclear positivity in exocrine glandular cells at 1:500-1:1000 dilution.