



Datasheet for ABIN5577785
anti-FAM171B antibody



[Go to Product page](#)

1 Image

Overview

Quantity:	100 µL
Target:	FAM171B
Reactivity:	Human
Host:	Rabbit
Clonality:	Polyclonal
Conjugate:	This FAM171B antibody is un-conjugated
Application:	Immunohistochemistry (Paraffin-embedded Sections) (IHC (p)), Western Blotting (WB)

Product Details

Purpose:	Rabbit polyclonal antibody raised against recombinant FAM171B.
Immunogen:	Recombinant protein corresponding to amino acids of human FAM171B.
Sequence:	FEDTVLITGK LADAKSQPSV QFSKALIKLP DNHHISNVTG YLTVLQQFLK VDNFLHTTGI TLNKPGFENI ELTPLAAICV KIYSGGKELK VNGSIQVSLP LLRLNDISAG DRIPAWTFDM NTGAWVNHGR GM
Isotype:	IgG
Cross-Reactivity:	Human

Target Details

Target:	FAM171B
Alternative Name:	FAM171B (FAM171B Products)

Target Details

Background: Full Gene Name: family with sequence similarity 171, member B
Synonyms: FLJ34104,KIAA1946

Gene ID: 165215

Application Details

Application Notes: Immunohistochemistry (1:50-1:200)
Western Blot (1:250-1:500)
The optimal working dilution should be determined by the end user.

Restrictions: For Research Use only

Handling

Format: Liquid

Buffer: In PBS, pH 7.2 (40 % glycerol, 0.02 % sodium azide)

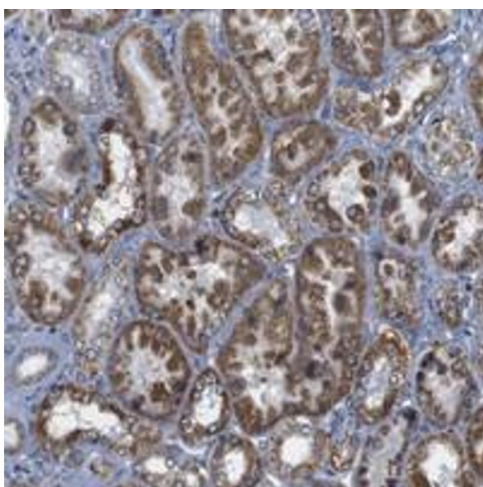
Preservative: Sodium azide

Precaution of Use: This product contains Sodium azide: a POISONOUS AND HAZARDOUS SUBSTANCE which should be handled by trained staff only.

Storage: 4 °C, -20 °C

Storage Comment: Store at 4°C. For long term storage store at -20°C.
Aliquot to avoid repeated freezing and thawing.

Images



Immunohistochemistry

Image 1. Immunohistochemical staining of human kidney with FAM171B polyclonal antibody shows strong cytoplasmic positivity in cells in tubules at 1:50-1:200 dilution.