



[Go to Product page](#)

Datasheet for ABIN5577816

anti-LRRC75A/FAM211A antibody

1 Image

Overview

Quantity:	100 µL
Target:	LRRC75A/FAM211A (LRRC75A)
Reactivity:	Human
Host:	Rabbit
Clonality:	Polyclonal
Conjugate:	This LRRC75A/FAM211A antibody is un-conjugated
Application:	Immunohistochemistry (Paraffin-embedded Sections) (IHC (p))

Product Details

Purpose:	Rabbit polyclonal antibody raised against recombinant FAM211A.
Immunogen:	Recombinant protein corresponding to amino acids of human FAM211A.
Sequence:	GMVQELLRMV RQGRREEAGT LLQHRLQDLG MESTSLDDVL YRYASFRNLV DPITHDLIIS LARYIHCPKP
Isotype:	IgG
Cross-Reactivity:	Human

Target Details

Target:	LRRC75A/FAM211A (LRRC75A)
Alternative Name:	FAM211A (LRRC75A Products)
Background:	Full Gene Name: family with sequence similarity 211, member A

Target Details

Synonyms: C17orf76

Gene ID: 388341

Application Details

Application Notes: Immunohistochemistry (1:20-1:50)
The optimal working dilution should be determined by the end user.

Restrictions: For Research Use only

Handling

Format: Liquid

Buffer: In PBS, pH 7.2 (40 % glycerol, 0.02 % sodium azide)

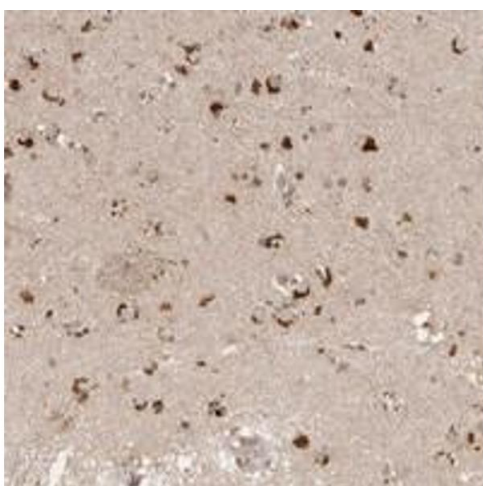
Preservative: Sodium azide

Precaution of Use: This product contains Sodium azide: a POISONOUS AND HAZARDOUS SUBSTANCE which should be handled by trained staff only.

Storage: 4 °C, -20 °C

Storage Comment: Store at 4°C. For long term storage store at -20°C.
Aliquot to avoid repeated freezing and thawing.

Images



Immunohistochemistry

Image 1. Immunohistochemical staining of human lateral ventricle with FAM211A polyclonal antibody shows strong cytoplasmic positivity in neuronal cells at 1:20-1:50 dilution.