

Datasheet for ABIN5577824  
**anti-FAM214A antibody**[Go to Product page](#)

## 1 Image

## Overview

Quantity:	100 µL
Target:	FAM214A
Reactivity:	Human
Host:	Rabbit
Clonality:	Polyclonal
Conjugate:	This FAM214A antibody is un-conjugated
Application:	Immunohistochemistry (Paraffin-embedded Sections) (IHC (p))

## Product Details

Purpose:	Rabbit polyclonal antibody raised against recombinant FAM214A.
Immunogen:	Recombinant protein corresponding to amino acids of human FAM214A.
Sequence:	TNEGKIRLKP ETPRSETCIS NDFYSHMPVG ETNPLIGSLL QERQDVIARI AQHLEHIDPT ASHIPRQSFN MHDSSSVASK VFRSSYEDKN LLKKNKDESS VSI SHT
Isotype:	IgG
Cross-Reactivity:	Human

## Target Details

Target:	FAM214A
Alternative Name:	FAM214A ( <a href="#">FAM214A Products</a> )
Background:	Full Gene Name: family with sequence similarity 214, member A

## Target Details

Synonyms: KIAA1370

Gene ID: 56204

## Application Details

Application Notes: Immunohistochemistry (1:20-1:50)  
The optimal working dilution should be determined by the end user.

Restrictions: For Research Use only

## Handling

Format: Liquid

Buffer: In PBS, pH 7.2 (40 % glycerol, 0.02 % sodium azide)

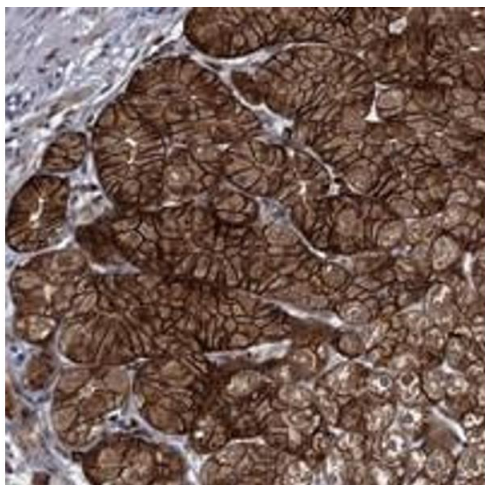
Preservative: Sodium azide

Precaution of Use: This product contains Sodium azide: a POISONOUS AND HAZARDOUS SUBSTANCE which should be handled by trained staff only.

Storage: 4 °C, -20 °C

Storage Comment: Store at 4°C. For long term storage store at -20°C.  
Aliquot to avoid repeated freezing and thawing.

## Images



### Immunohistochemistry

**Image 1.** Immunohistochemical staining of human stomach with FAM214A polyclonal antibody shows strong cytoplasmic and membranous positivity in glandular cells.