



Datasheet for ABIN5577830  
**anti-LOC646851 antibody**



[Go to Product page](#)

1 Image

Overview

Quantity:	100 µL
Target:	LOC646851 (FAM227A)
Reactivity:	Human
Host:	Rabbit
Clonality:	Polyclonal
Application:	Immunohistochemistry (Paraffin-embedded Sections) (IHC (p))

Product Details

Purpose:	Rabbit polyclonal antibody raised against partial recombinant human FAM227A.
Immunogen:	Recombinant protein corresponding to human FAM227A.
Sequence:	TLVLKKPTQE VKRISEAREC ENMFPPKSCA ACKSPELTSN LFNIYGKSPL IVYFLQNYAS LQQHGKNVLI VRREKTTSTP DCTPTYTDVI SETLCSMKKR KDNLNQLYQH HWTEWNYFDK HLKELQDNFS REMKNIDPKA ADTK
Isotype:	IgG
Cross-Reactivity:	Human

Target Details

Target:	LOC646851 (FAM227A)
Alternative Name:	LOC646851 ( <a href="#">FAM227A Products</a> )
Background:	Full Gene Name: similar to OTTHUMP00000028720

## Target Details

---

Gene ID: 646851

## Application Details

---

Application Notes: Immunohistochemistry (Formalin/PFA-fixed paraffin-embedded sections) (1:50-1:200)  
The optimal working dilution should be determined by the end user.

Restrictions: For Research Use only

## Handling

---

Format: Liquid

Buffer: In PBS, pH 7.2 (40 % glycerol, 0.02 % sodium azide).

Preservative: Sodium azide

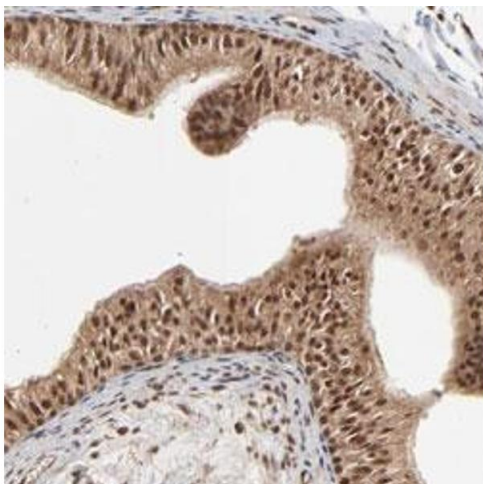
Precaution of Use: This product contains Sodium azide: a POISONOUS AND HAZARDOUS SUBSTANCE which should be handled by trained staff only.

Storage: 4 °C,-20 °C

Storage Comment: Store at 4°C. For long term storage store at -20°C.  
Aliquot to avoid repeated freezing and thawing.

## Images

---



### Immunohistochemistry

**Image 1.** Immunohistochemical staining (Formalin-fixed paraffin-embedded sections) of human epididymis with FAM227A polyclonal antibody shows strong nuclear and moderate cytoplasmic positivity in glandular cells at 1:50-1:200 dilution.