

Datasheet for ABIN5577855
anti-ESYT1 antibody (Internal Region)[Go to Product page](#)

2 Images

Overview

Quantity:	50 µg
Target:	ESYT1
Binding Specificity:	Internal Region
Reactivity:	Human, Mouse, Rat, Cow, Pig, Monkey, Guinea Pig, Horse, Rabbit, Chimpanzee
Host:	Rabbit
Clonality:	Polyclonal
Conjugate:	This ESYT1 antibody is un-conjugated
Application:	Immunohistochemistry (Paraffin-embedded Sections) (IHC (p))

Product Details

Purpose:	Rabbit polyclonal antibody raised against synthetic peptide of FAM62A.
Immunogen:	A synthetic peptide corresponding to 17 amino acid at internal region of human FAM62A.
Specificity:	BLAST analysis of the peptide immunogen showed no homology with other human proteins, except ESYT2 (65 %).
Cross-Reactivity:	Chimpanzee, Cow, Guinea Pig, Horse, Human, Monkey, Mouse, Pig, Rabbit, Rat
Cross-Reactivity (Details):	BLAST analysis of the peptide immunogen showed no homology with other human proteins, except ESYT2 (65 %).

Target Details

Target:	ESYT1
---------	-------

Target Details

Alternative Name:	FAM62A (ESYT1 Products)
Background:	Full Gene Name: family with sequence similarity 62 (C2 domain containing), member A Synonyms: KIAA0747,MBC2
Gene ID:	23344

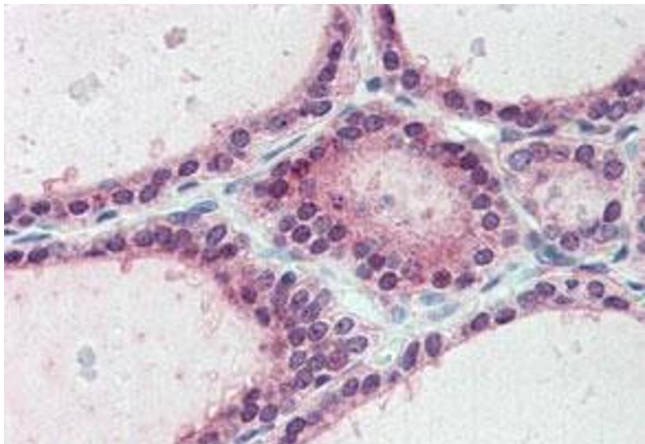
Application Details

Application Notes:	Immunohistochemistry (Formalin/PFA-fixed paraffin-embedded sections) (10 µg/mL) The optimal working dilution should be determined by the end user.
Restrictions:	For Research Use only

Handling

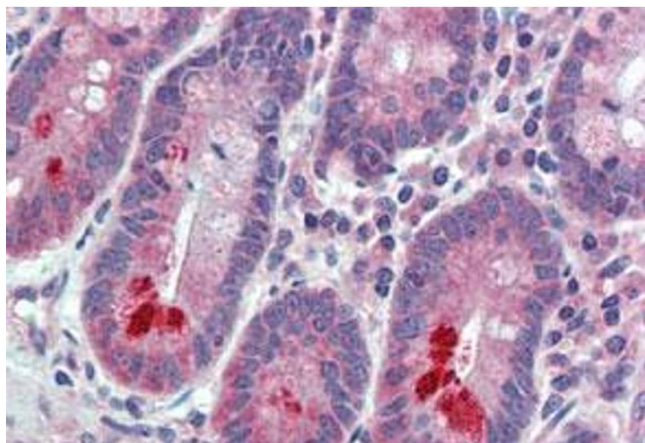
Format:	Liquid
Buffer:	In PBS (0.09 % sodium azide)
Preservative:	Sodium azide
Precaution of Use:	This product contains Sodium azide: a POISONOUS AND HAZARDOUS SUBSTANCE which should be handled by trained staff only.
Storage:	4 °C,-80 °C
Storage Comment:	Store at 4°C. For long term storage store at -80°C. Aliquot to avoid repeated freezing and thawing.

Images



Immunohistochemistry

Image 1. Immunohistochemistry (Formalin/PFA-fixed paraffin-embedded sections) of human thyroid tissue with FAM62A polyclonal antibody . Immunohistochemistry of formalin-fixed, paraffin-embedded tissue after heat-induced antigen retrieval.



Immunohistochemistry

Image 2. Immunohistochemistry (Formalin/PFA-fixed paraffin-embedded sections) of human small intestine tissue with FAM62A polyclonal antibody . Immunohistochemistry of formalin-fixed, paraffin-embedded tissue after heat-induced antigen retrieval.