



[Go to Product page](#)

Datasheet for ABIN5577936
anti-Fibulin 1 antibody (AA 266-402)

2 Images

Overview

Quantity:	100 µL
Target:	Fibulin 1 (FBLN1)
Binding Specificity:	AA 266-402
Reactivity:	Human
Host:	Rabbit
Clonality:	Polyclonal
Conjugate:	This Fibulin 1 antibody is un-conjugated
Application:	Western Blotting (WB), Immunohistochemistry (Paraffin-embedded Sections) (IHC (p))

Product Details

Purpose:	Rabbit polyclonal antibody raised against partial recombinant human FBLN1.
Immunogen:	Recombinant protein corresponding to amino acids 266 - 402 of human FBLN1.
Sequence:	CESGIHNCLP DFICQNTLGS FRCRPKLQCK SGFIQDALGN CIDINECLSI SAPCPIGHTC INTEGSYTCQ KNVPNCGRGY HLNEEGTRCV DVDECAPPAE PCGKGHRCVN SPGSFRCECK TGYFDGISR MCVDVNE
Isotype:	IgG
Cross-Reactivity:	Human

Target Details

Target:	Fibulin 1 (FBLN1)
---------	-------------------

Target Details

Alternative Name: FBLN1 ([FBLN1 Products](#))

Background: Full Gene Name: fibulin 1
Synonyms: FBLN

Gene ID: 2192

Application Details

Application Notes: Immunohistochemistry (Formalin/PFA-fixed paraffin-embedded sections) (1:200 - 1:500)
Western Blot (1:250 - 1:500)
The optimal working dilution should be determined by the end user.

Restrictions: For Research Use only

Handling

Format: Liquid

Buffer: In PBS, pH 7.2 (40 % glycerol, 0.02 % sodium azide).

Preservative: Sodium azide

Precaution of Use: This product contains Sodium azide: a POISONOUS AND HAZARDOUS SUBSTANCE which should be handled by trained staff only.

Storage: 4 °C, -20 °C

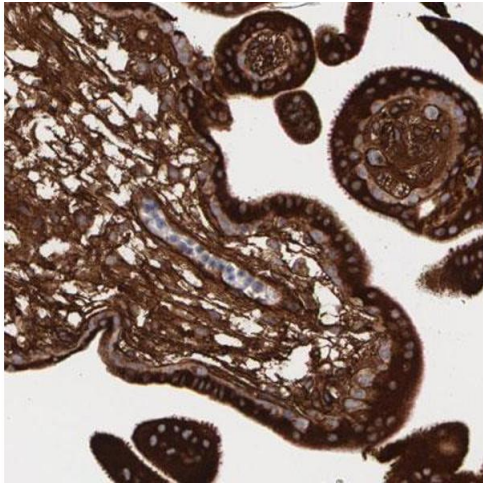
Storage Comment: Store at 4°C. For long term storage store at -20°C.
Aliquot to avoid repeated freezing and thawing.

Images



Western Blotting

Image 1. Western blot analysis of Lane 1: Negative control (vector only transfected HEK293T lysate), Lane 2: Over-expression lysate (Co-expressed with a C-terminal myc-DDK tag (~3.1 kDa) in mammalian HEK293T cells) with FBLN1 polyclonal antibody .



Immunohistochemistry

Image 2. Immunohistochemical staining (Formalin-fixed paraffin-embedded sections) of human placenta shows strong cytoplasmic positivity in trophoblastic cells and distinct stromal positivity with FBLN1 polyclonal antibody .