



[Go to Product page](#)

Datasheet for ABIN5577971
anti-FBXO5 antibody (AA 1-250)

2 Images

Overview

Quantity:	100 µg
Target:	FBXO5
Binding Specificity:	AA 1-250
Reactivity:	Human
Host:	Mouse
Clonality:	Monoclonal
Conjugate:	This FBXO5 antibody is un-conjugated
Application:	Western Blotting (WB), Immunofluorescence (IF), Flow Cytometry (FACS), Immunohistochemistry (Paraffin-embedded Sections) (IHC (p))

Product Details

Purpose:	Mouse monoclonal antibody raised against partial recombinant human FBXO5.
Immunogen:	Recombinant protein corresponding to 203 residues around amino acids 1-250 of human FBXO5.
Clone:	EMI1-1176
Isotype:	IgG2a
Cross-Reactivity:	Human

Target Details

Target:	FBXO5
---------	-------

Target Details

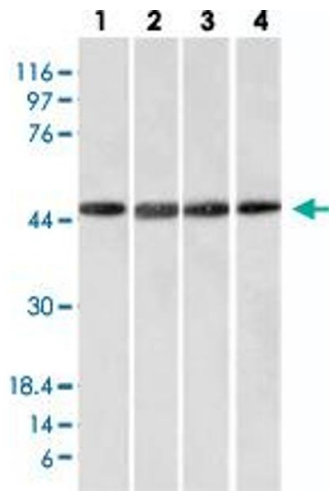
Alternative Name:	FBX05 (FBX05 Products)
Background:	Full Gene Name: F-box protein 5 Synonyms: EMI1,FBX5,Fbxo31
Gene ID:	26271
Pathways:	Mitotic G1-G1/S Phases

Application Details

Application Notes:	Flow Cytometry (0.5-1 µg/10 ⁶ cells in 0.1 mL) Immunofluorescence (0.5-1 µg/mL) Immunohistochemistry (Formalin/PFA-fixed paraffin-embedded sections) (0.5-1 µg/mL) Western Blot (1-2 µg/mL) The optimal working dilution should be determined
Restrictions:	For Research Use only

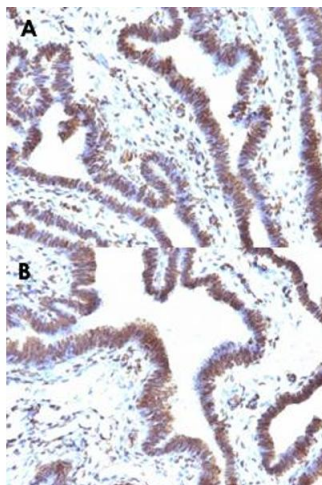
Handling

Format:	Liquid
Buffer:	In 1 mM PBS (0.05 % BSA, 0.05 % sodium azide).
Preservative:	Sodium azide
Precaution of Use:	This product contains Sodium azide: a POISONOUS AND HAZARDOUS SUBSTANCE which should be handled by trained staff only.
Storage:	4 °C
Storage Comment:	Store at 4°C.



Western Blotting

Image 1. Western Blot analysis of Lane 1: HeLa, Lane 2: HepG2, Lane 3: HEK293 and Lane 4: K562 cell lysates with FBXO5 monoclonal antibody, clone EMI1/1176 .



Immunohistochemistry

Image 2. Immunohistochemical staining (Formalin-fixed paraffin-embedded sections) of human ovarian cancer (A, B) with FBXO5 monoclonal antibody, clone EMI1/1176 .