

Datasheet for ABIN5577999

anti-FCGR2A antibody**3** Images[Go to Product page](#)

Overview

Quantity:	50 µL
Target:	FCGR2A
Reactivity:	Human
Host:	Mouse
Clonality:	Monoclonal
Conjugate:	This FCGR2A antibody is un-conjugated
Application:	Western Blotting (WB), Immunofluorescence (IF), Immunoprecipitation (IP), Immunohistochemistry (Paraffin-embedded Sections) (IHC (p))

Product Details

Purpose:	Mouse monoclonal antibody raised against full length recombinant human FCGR2A.
Immunogen:	Recombinant protein corresponding to full length human FCGR2A.
Clone:	13D7
Isotype:	IgG2b
Cross-Reactivity:	Human

Target Details

Target:	FCGR2A
Alternative Name:	FCGR2A (FCGR2A Products)
Background:	Full Gene Name: Fc fragment of IgG, low affinity IIa, receptor (CD32)

Target Details

Synonyms: CD32,CD32A,CDw32,FCG2,FCGR2,FCGR2A1,FcGR,IGFR2,MGC23887,MGC30032

Gene ID: 2212

Application Details

Application Notes: Immunofluorescence (1:100)
Immunohistochemistry (Formalin/PFA-fixed paraffin-embedded sections) (10 µg/mL)
Immunoprecipitation
Western Blot (1:2000)
The optimal working dilution should be determined by the end user.

Restrictions: For Research Use only

Handling

Format: Liquid

Buffer: In PBS, pH 7.3 (50 % glycerol, 1 % BSA, 0.02 % sodium azide).

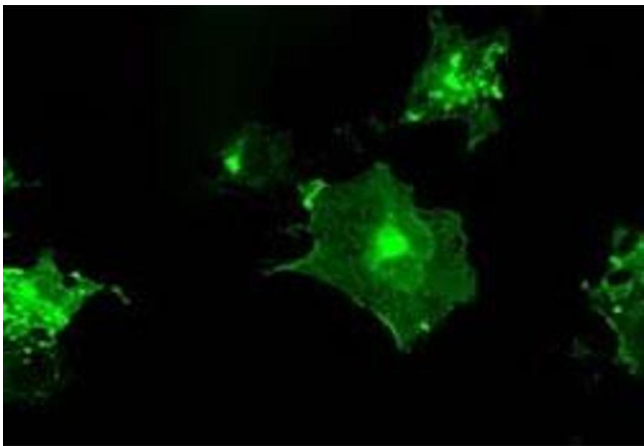
Preservative: Sodium azide

Precaution of Use: This product contains Sodium azide: a POISONOUS AND HAZARDOUS SUBSTANCE which should be handled by trained staff only.

Storage: -20 °C

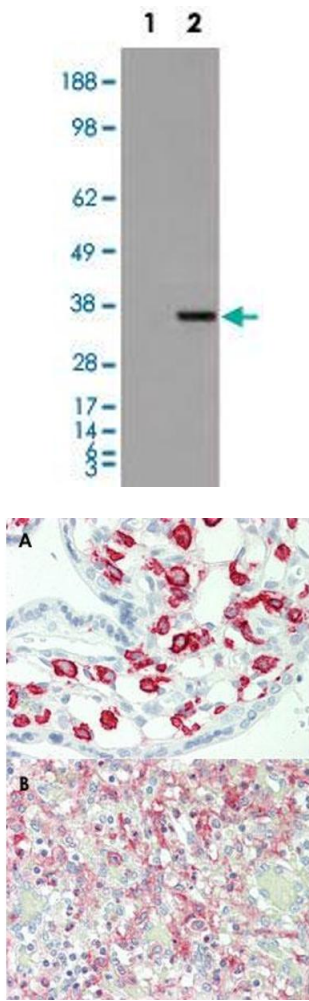
Storage Comment: Store at -20°C.
Aliquot to avoid repeated freezing and thawing.

Images



Immunofluorescence

Image 1. Immunofluorescent staining of COS-7 cells with FCGR2A monoclonal antibody, clone 13D7 transiently transfected by pCMV6-ENTRY FCGR2A.



Western Blotting

Image 2. Western Blot analysis of HEK293T cells transfected with the Lane 1: pCMV6-ENTRY control and Lane 2: pCMV6-ENTRY FCGR2A cDNA for 48 hrs (5 ug/lane) using FCGR2A monoclonal antibody, clone 13D7 .

Immunohistochemistry

Image 3. Immunohistochemical staining (Formalin-fixed paraffin-embedded sections) of human placenta (A) and human spleen (B) with FCGR2A monoclonal antibody, clone 13D7 .