

Datasheet for ABIN5578001
anti-FCGR2B antibody (Ser363)[Go to Product page](#)

1 Image

Overview

Quantity:	100 µg
Target:	FCGR2B
Binding Specificity:	Ser363
Reactivity:	Human
Host:	Rabbit
Clonality:	Polyclonal
Conjugate:	This FCGR2B antibody is un-conjugated
Application:	Western Blotting (WB)

Product Details

Purpose:	Rabbit polyclonal antibody raised against synthetic peptide of FCGR2B.
Immunogen:	A synthetic peptide corresponding to residues surrounding serine 363 of human FCGR2B.
Specificity:	This antibody detects endogenous levels of total FCGR2B protein.
Cross-Reactivity:	Human

Target Details

Target:	FCGR2B
Alternative Name:	FCGR2B (FCGR2B Products)
Background:	Full Gene Name: Fc fragment of IgG, low affinity IIb, receptor (CD32) Synonyms: CD32,CD32B,FCG2,FCGR2,IGFR2

Target Details

Gene ID:	2213
Pathways:	Cellular Response to Molecule of Bacterial Origin , Regulation of Leukocyte Mediated Immunity , Production of Molecular Mediator of Immune Response , BCR Signaling

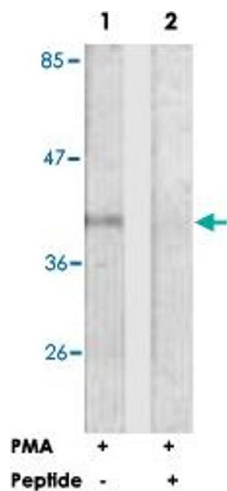
Application Details

Application Notes:	Western Blot (1:500-1:1000) ELISA (1:5000) The optimal working dilution should be determined by the end user.
Restrictions:	For Research Use only

Handling

Format:	Liquid
Buffer:	In PBS, pH 7.4 (150 mM NaCl, 0.02 % sodium azide, 50 % glycerol)
Preservative:	Sodium azide
Precaution of Use:	This product contains Sodium azide: a POISONOUS AND HAZARDOUS SUBSTANCE which should be handled by trained staff only.
Storage:	-20 °C
Storage Comment:	Store at -20°C. Aliquot to avoid repeated freezing and thawing.

Images



Western Blotting

Image 1. Western blot analysis of extracts from Jurkat cells, treated with PMA (125 ng/ml, 30 mins), using FCGR2B polyclonal antibody . Peptide