



Datasheet for ABIN5578130
anti-FHDC1 antibody



[Go to Product page](#)

1 Image

Overview

Quantity:	100 µL
Target:	FHDC1
Reactivity:	Human
Host:	Rabbit
Clonality:	Polyclonal
Conjugate:	This FHDC1 antibody is un-conjugated
Application:	Immunohistochemistry (Paraffin-embedded Sections) (IHC (p))

Product Details

Purpose:	Rabbit polyclonal antibody raised against recombinant FHDC1.
Immunogen:	Recombinant protein corresponding to amino acids of human FHDC1.
Sequence:	EHELVTGLAQ FNLQGSQGME ETSQLTSLDF SPMELESVGH RGPQSLSSASS SSLTPMGRDA LGSLSPALED GKAAPDEPGS AALGSVGSSD PENK DPRPLF CISDTTDCSL TLDCSEGTD S RPRGGDPEEG GEGD GSMSSG V
Isotype:	IgG
Cross-Reactivity:	Human

Target Details

Target:	FHDC1
Alternative Name:	FHDC1 (FHDC1 Products)

Target Details

Background: Full Gene Name: FH2 domain containing 1
Synonyms: KIAA1727

Gene ID: 85462

Application Details

Application Notes: Immunohistochemistry (1:50-1:200)
The optimal working dilution should be determined by the end user.

Restrictions: For Research Use only

Handling

Format: Liquid

Buffer: In PBS, pH 7.2 (40 % glycerol, 0.02 % sodium azide)

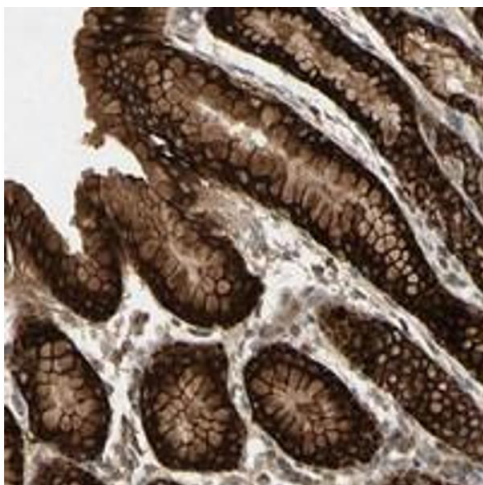
Preservative: Sodium azide

Precaution of Use: This product contains Sodium azide: a POISONOUS AND HAZARDOUS SUBSTANCE which should be handled by trained staff only.

Storage: 4 °C,-20 °C

Storage Comment: Store at 4°C. For long term storage store at -20°C.
Aliquot to avoid repeated freezing and thawing.

Images



Immunohistochemistry

Image 1. Immunohistochemical staining of human stomach with FHDC1 polyclonal antibody strong cytoplasmic positivity in glandular cells.