



[Go to Product page](#)

Datasheet for ABIN5578209
anti-CPSF7 antibody (C-Term)

2 Images

Overview

Quantity:	100 µL
Target:	CPSF7
Binding Specificity:	C-Term
Reactivity:	Human
Host:	Rabbit
Clonality:	Polyclonal
Conjugate:	This CPSF7 antibody is un-conjugated
Application:	Western Blotting (WB), Immunohistochemistry (Paraffin-embedded Sections) (IHC (p))

Product Details

Purpose:	Rabbit polyclonal antibody raised against synthetic peptide of human FLJ12529.
Immunogen:	A synthetic peptide corresponding to C-terminus of human FLJ12529.
Sequence:	GASGSSSRKR HRSRERSPSR SRESSRRHRD LLHNEDRHDD YFQERNREHE
Cross-Reactivity:	Human

Target Details

Target:	CPSF7
Alternative Name:	FLJ12529 (CPSF7 Products)
Background:	Full Gene Name: pre-mRNA cleavage factor I, 59 kDa subunit Synonyms: FLJ39024,MGC9315

Target Details

Gene ID: 79869

NCBI Accession: [NM_024811](#)

Application Details

Application Notes: Immunohistochemistry (Formalin/PFA-fixed paraffin-embedded sections) (4-8 µg/mL)
Western Blot (1.25 µg/mL)
The optimal working dilution should be determined by the end user.

Restrictions: For Research Use only

Handling

Format: Liquid

Buffer: In PBS (2 % sucrose, 0.09 % sodium azide).

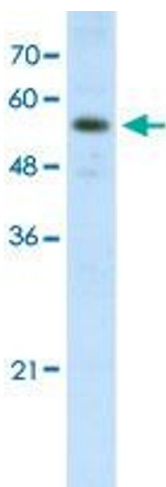
Preservative: Sodium azide

Precaution of Use: This product contains Sodium azide: a POISONOUS AND HAZARDOUS SUBSTANCE which should be handled by trained staff only.

Storage: 4 °C,-20 °C

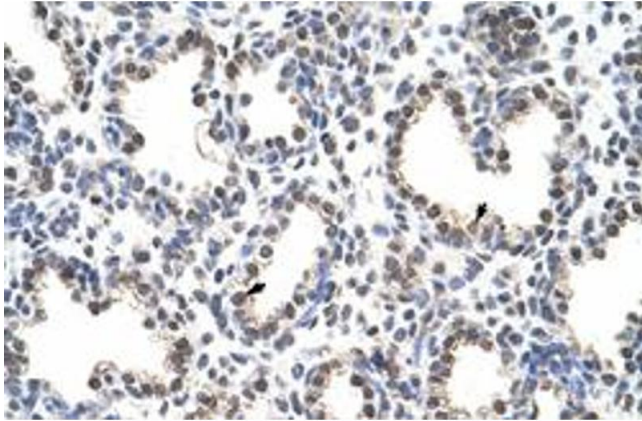
Storage Comment: Store at 4°C. For long term storage store at -20°C.
Aliquot to avoid repeated freezing and thawing.

Images



Western Blotting

Image 1. Western Blot analysis of HepG2 cell lysate with FLJ12529 polyclonal antibody at 1.25 µg/mL working concentration.



Immunohistochemistry

Image 2. Immunohistochemical staining (Formalin-fixed paraffin-embedded sections) of human lung with FLJ12529 polyclonal antibody at 4-8 ug/mL working concentration.